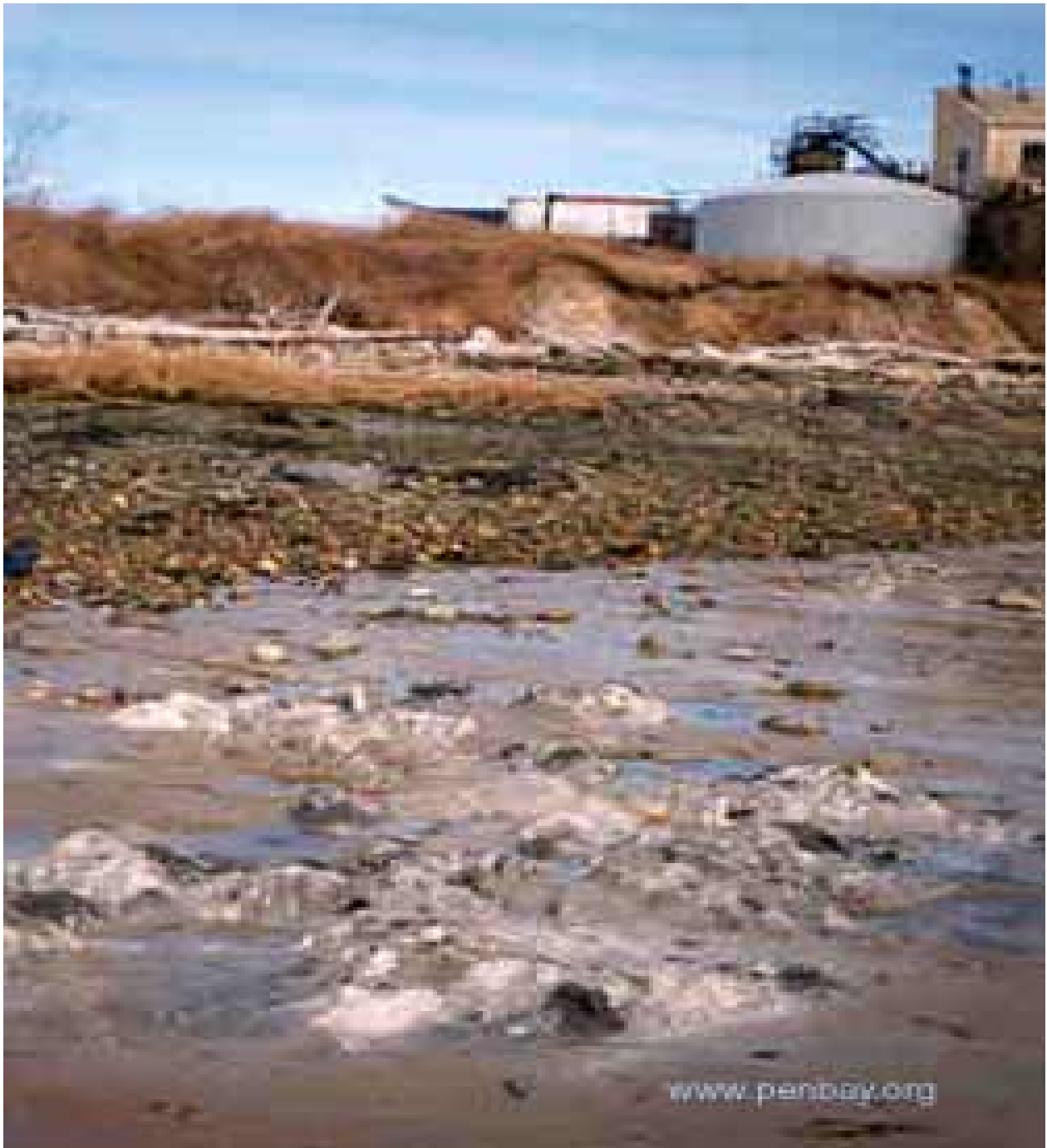


Part 2

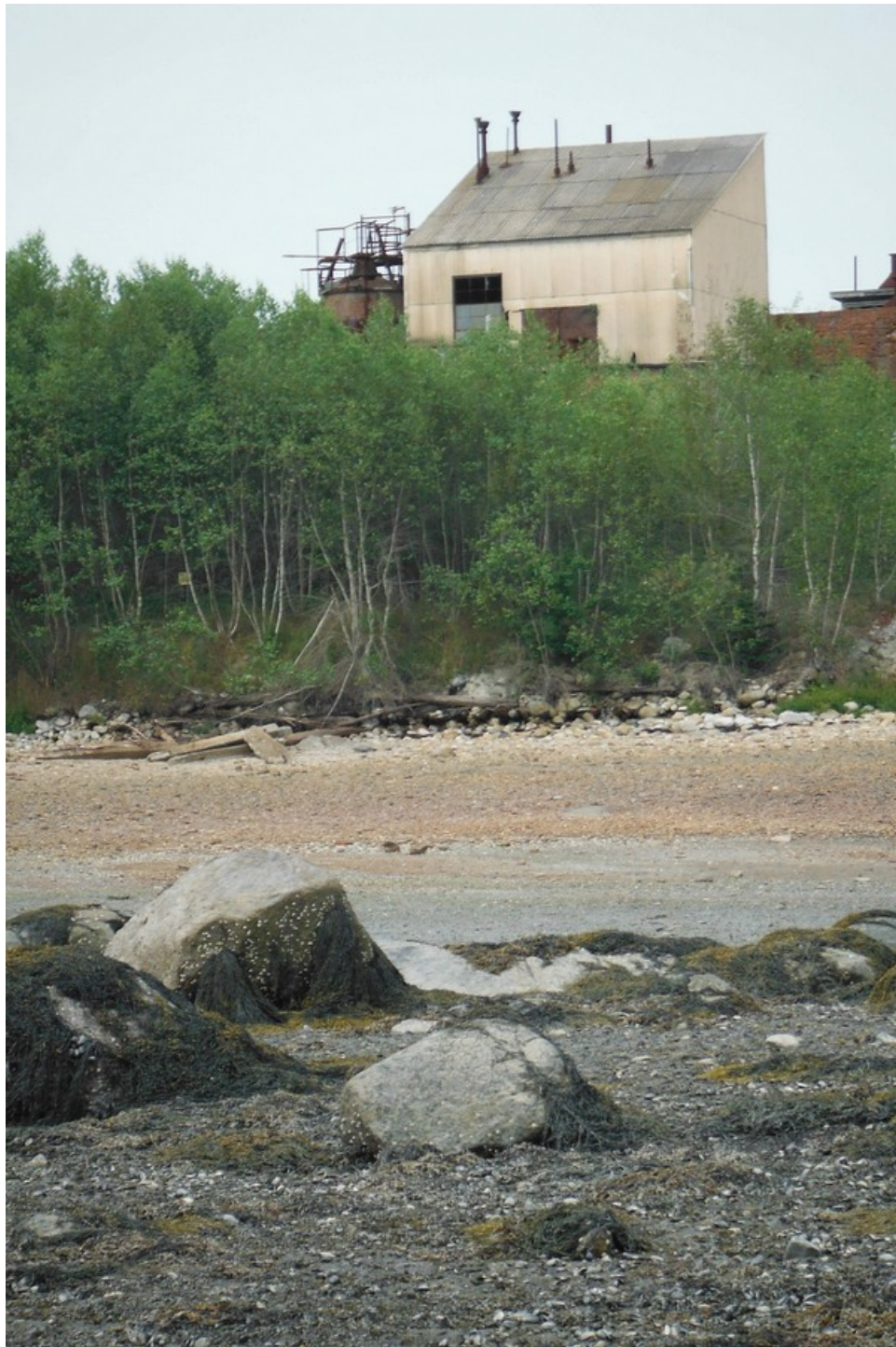
**SHORELINE
TOUR OF
THE
KIDDER POINT
SHORE**



Sediment sampling runs, Stockton Harbor, 1/30/14 for pH testing by Dr Mark Green, St Joseph's College, Standish, ME, for Friends of Penobscot Bay. Photo courtesy Project Lighthawk



**A new
“Shining Shore”**



**Abandoned
acid factory**



**Wooden waste
corrals**



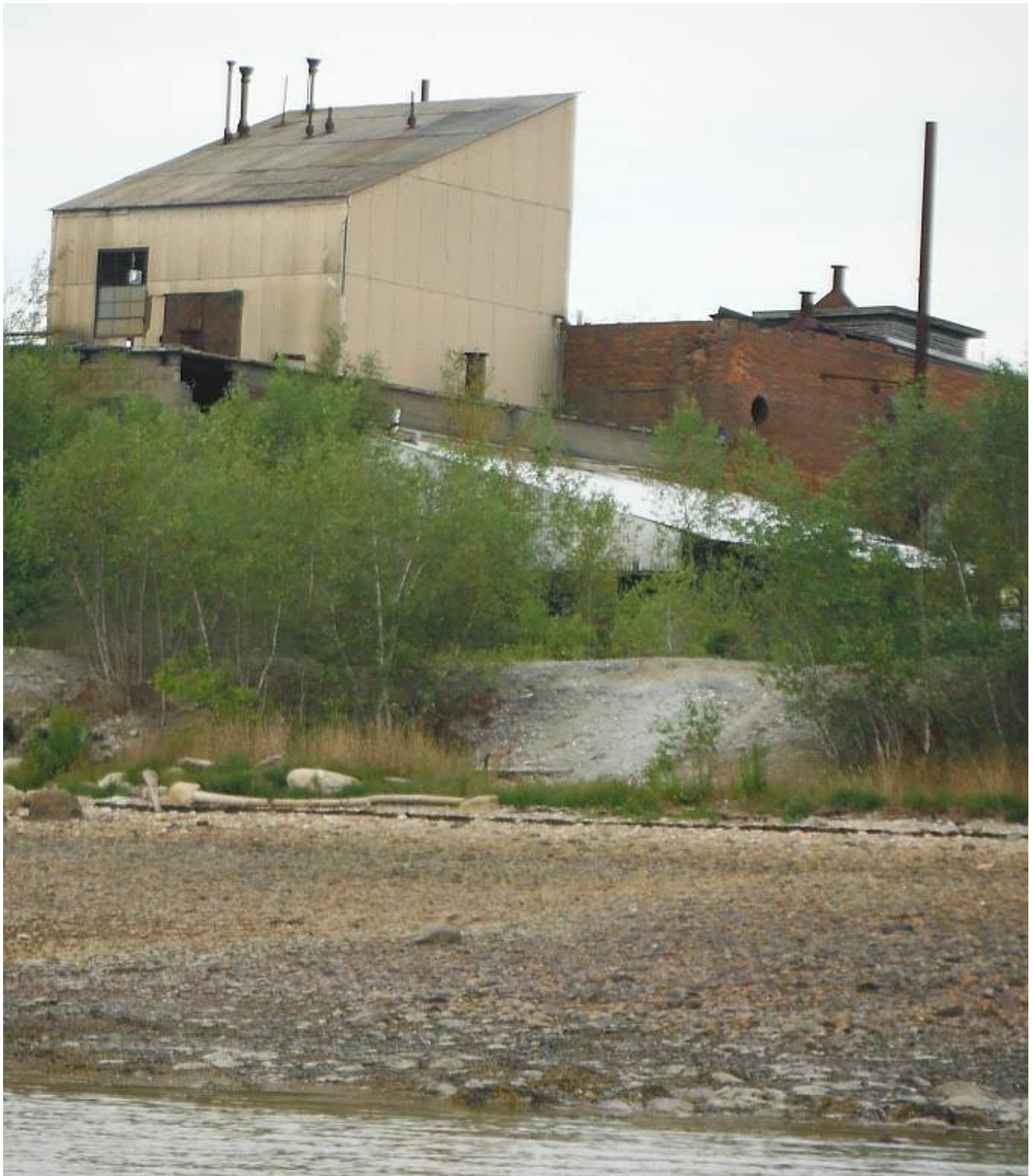








Ceramic waste



**Acid factory
eroding wastes**





Tainted Intertidal

Bauxite mud, wrote Delta
Chemical Mgr Alec Horth
Natural, said DEP.





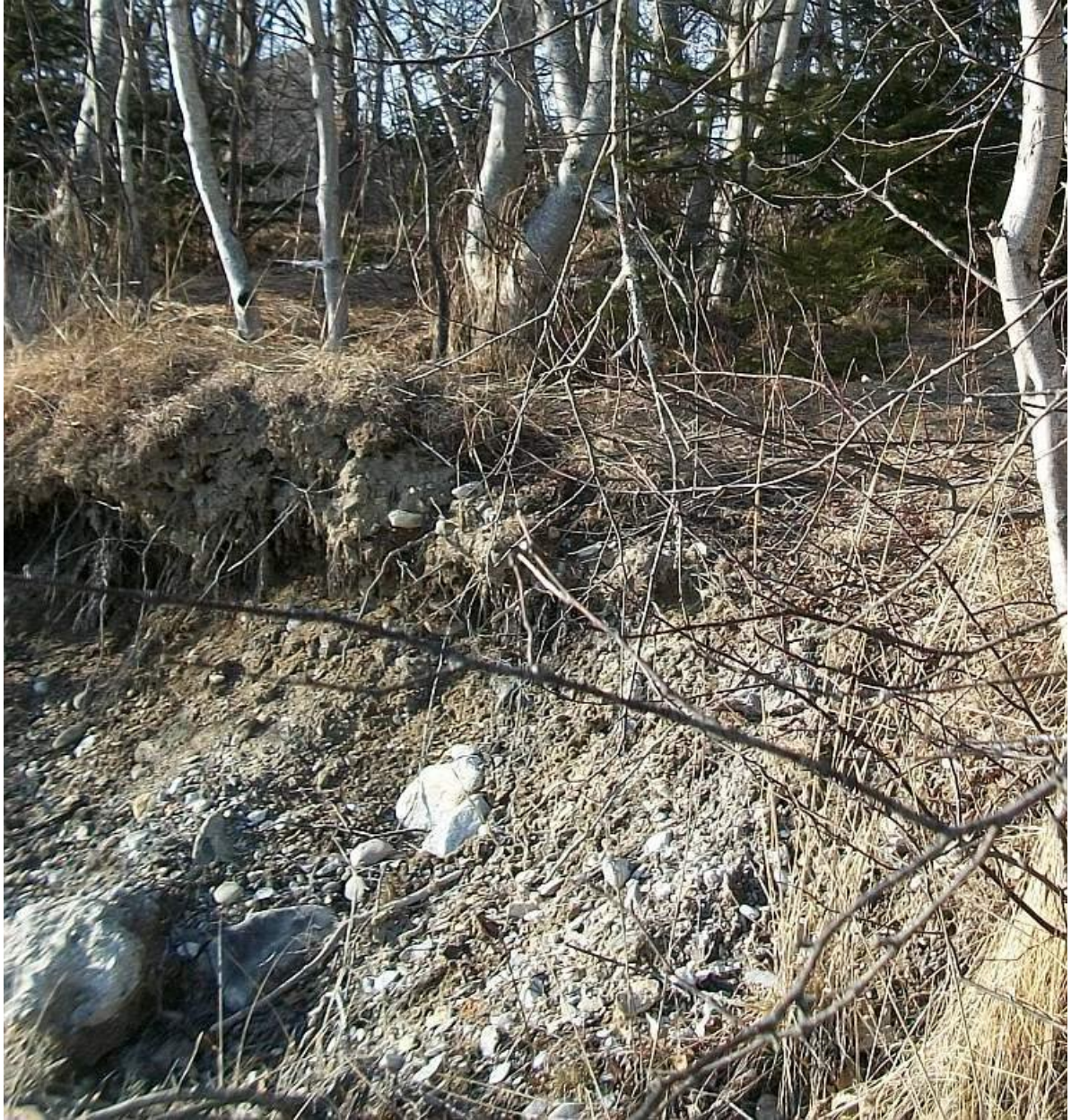


**“Thriving”
ecosystem**

says DEP



**TARPAPER IN
INTERTIDAL FROM
NOW GONE
FERTILIZER PLANT**



Searsport, Maine. GAC Chemical facility. Active area is above MMA Railroad tracks.

Tip of Kidder Point in Stockton Harbor has abandoned factory (A) with tank, and cleared site of former bulk storage quonset hut. (B)

C = Beach contaminated with chemical wastes from abandoned factory and eroding bauxite tailings dumped on shore

D to E Shoreline expanded out onto beach on wooden-cribbed waste dumps



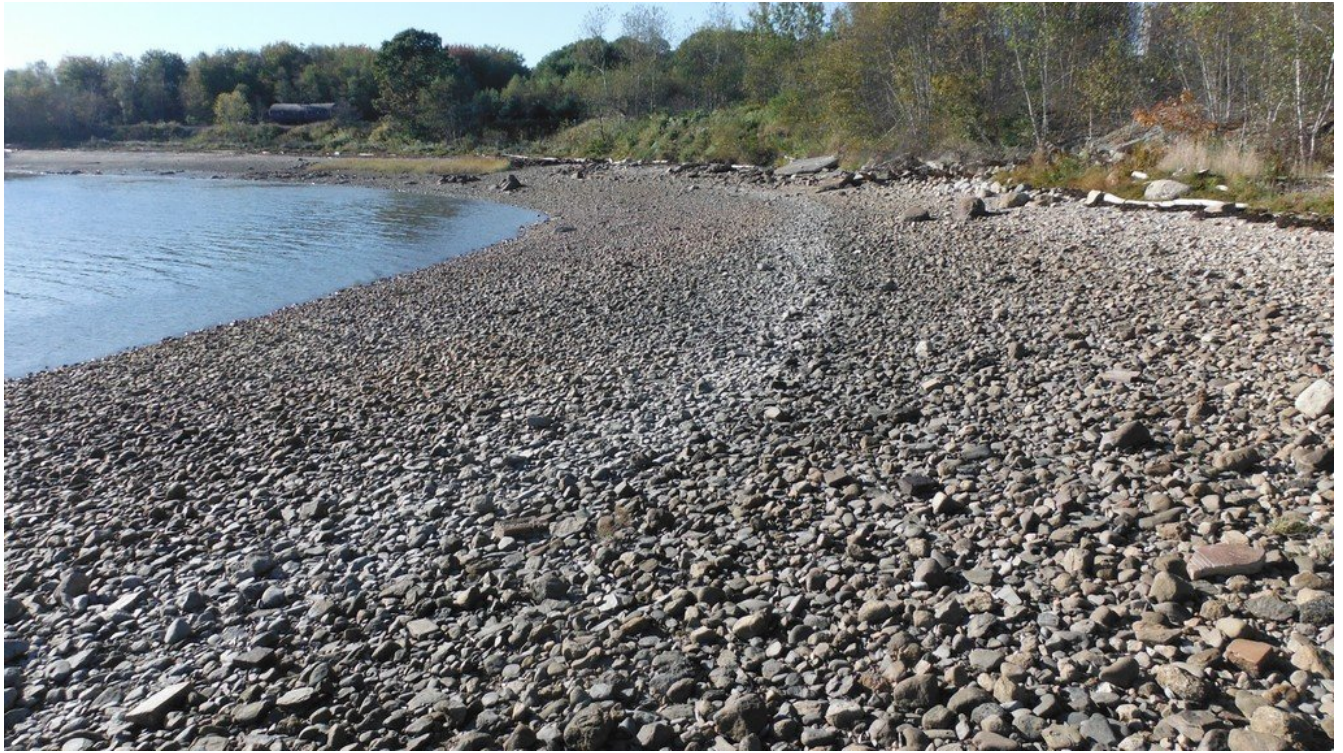




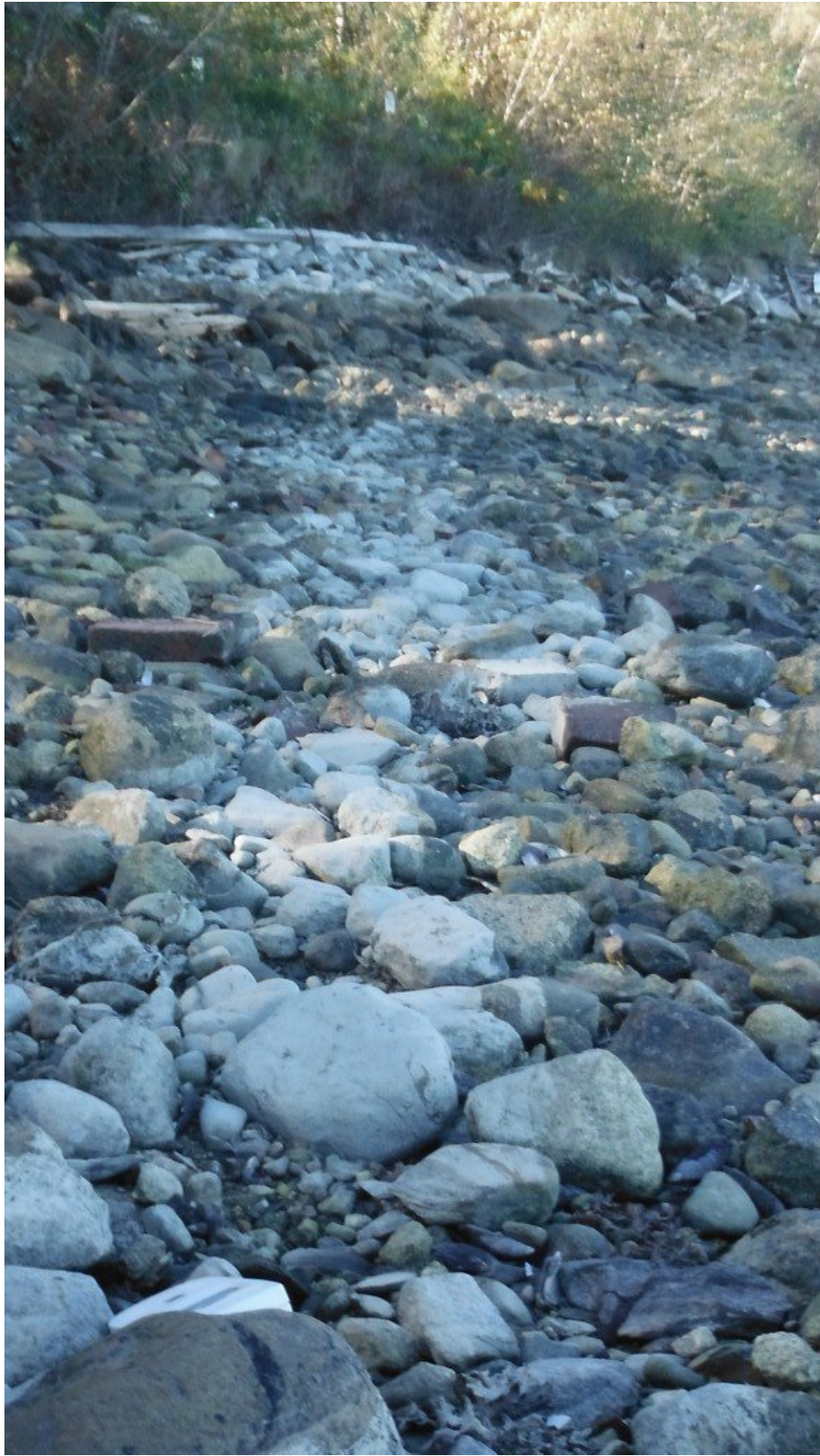


























MOST WASTE DEPOSITED ON THIS SHORE

NEXT PART 3 HISTORY

From New England newspapers and government reports of the time.