

# **SITE WALKOVER INSPECTION**

***Abandoned Sulphuric Acid  
Production Facility***

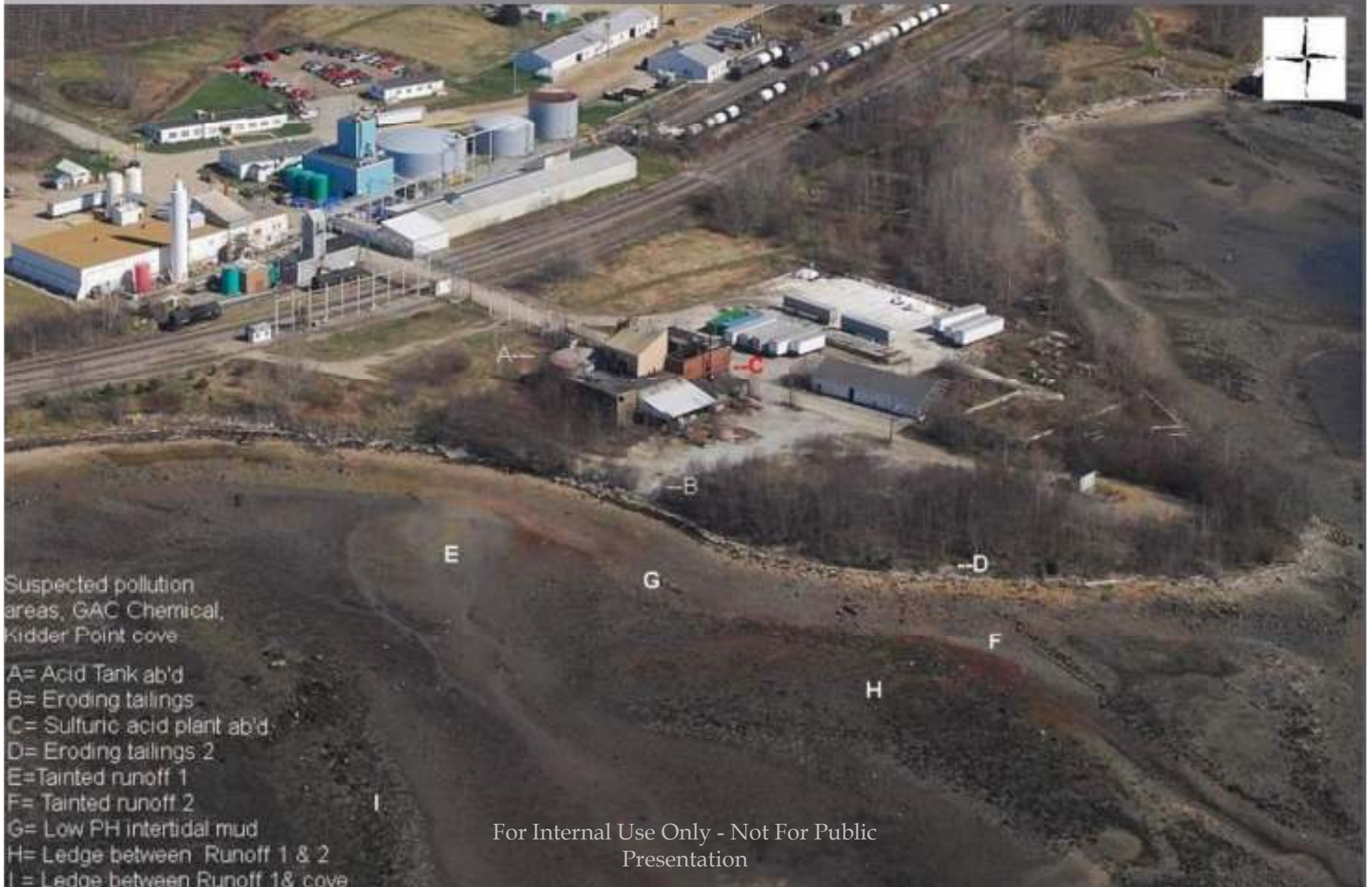
***GAC Chemical Corporation  
Searsport***

***Oct. 11, 2013***

For Internal Use Only - Not For Public  
Presentation

# Area Of Citizen Reported Concern: Shoreline & Mudflats of Kidder Point

Photo And Captions Courtesy of Ron Huber & Friends Of Penobscot Bay



# Site Walkover Inspection Performed By

- ▣ Wilkes Harper, OHMS II, DEP Main Office
- ▣ Karen Knuuti, ESIII, EMRO
- ▣ Susanne Miller, Regional Director, EMRO
- ▣ John Pond, Senior VP, CES Inc.

# Conditions

- ▣ **Time Of Inspection: Approx. 10AM – 12:15 AM**
- ▣ **Sunny**
- ▣ **Temperatures In The High 60's F**
- ▣ **Max Low Tide (10:00 AM)**
- ▣ **Light Wind**

# Looking East Along The Southern Shore

For Internal Use Only - Not For Public  
Presentation



For Internal Use Only - Not For Public  
Presentation

# LOOKING NORTH AT THE SOUTHERN SHORE

There Is A Reddish Stain Visible  
Along The Southern Shoreline

For Internal Use Only - Not For Public  
Presentation



For Internal Use Only - Not For Public  
Presentation



# More Reddish Staining Visible Along Eastern Half Of Southern Shore.

For Internal Use Only - Not For Public  
Presentation



For Internal Use Only - Not For Public  
Presentation

Red Staining Appears To Be Iron  
Leachate.

The Penobscot Formation Underlying  
Penobscot Bay Contains High  
Quantities Of Iron Deposits

Note Abundant Marine Life (Rockweeek  
and Bivalves) Present In The Red  
Staining Zone



For Internal Use Only - Not For Public  
Presentation

**Seaweed Grows On Rocky  
Substrates.**

**Seaweed Was Observed Growing  
On Most Every Rocky Surface In  
The Tidal Flats Along The  
Southern Shore**



For Internal Use Only - Not For Public  
Presentation

A Narrow White Line Was Present  
Below The High Tide Line  
Running East And West.

The Nature Of This Material Is  
Thought To Be Lighter Colored  
Mud That flowed In With The  
Tide From Elsewhere In the Bay



For Internal Use Only - Not For Public  
Presentation



# The Northern Shore

## Looking North From The Eastern-most Point

For Internal Use Only - Not For Public  
Presentation



For Internal Use Only - Not For Public  
Presentation

# Abandoned And Plugged Pipe Found On Eastern-most Point

For Internal Use Only - Not For Public  
Presentation



For Internal Use Only - Not For Public  
Presentation

# Abandoned Piping Once Used For Offshore Unloading Of Ammonia

For Internal Use Only - Not For Public  
Presentation



For internal Use Only - Not For Public  
Presentation

# Vintage Erosion Control Measures Used Along The Northern Shore

Its Construction Of Wooden  
Planking Is Now Rotting.

The Bluff Is Beginning To  
Crumble.



For Internal Use Only - Not For Public  
Presentation





For Internal Use Only - Not For Public  
Presentation

# The Abandoned Sulphuric Acid Production Facility

## Looking West Towards It's Eastern Side

For Internal Use Only - Not For Public  
Presentation



For Internal Use Only - Not For Public  
Presentation

# The Former Sulphur Storage Area On The East Side Of The Sulphuric Acid Production Facility

## Looking South Across It Towards The South Shore Line



For Internal Use Only - Not For Public  
Presentation

**Sulphur (Seen As Light Yellow Granules) Is Still Visible On The Ground In The Former Sulphur Storage Area**



For Internal Use Only - Not For Public  
Presentation



For Internal Use Only - Not For Public  
Presentation



**There Is No Barrier To  
Surface Water Runoff From  
The Former Sulphur Storage  
Area Towards The Southern  
Shoreline**

**View Is Looking South**



For Internal Use Only - Not For Public  
Presentation

**Abandoned Sulfuric Acid Tank**

**Approx. 220,000 Gallons Capacity**

**Now Empty**

**Located On The West Side of the  
Former Sulphuric Acid Production  
Facility**

For Internal Use Only - Not For Public  
Presentation



For Internal Use Only - Not For Public  
Presentation

# Foundation Of The Abandoned Sulphuric Acid Tank

## Sand Base Surrounded By A Concrete Ring



For Internal Use Only - Not For Public  
Presentation