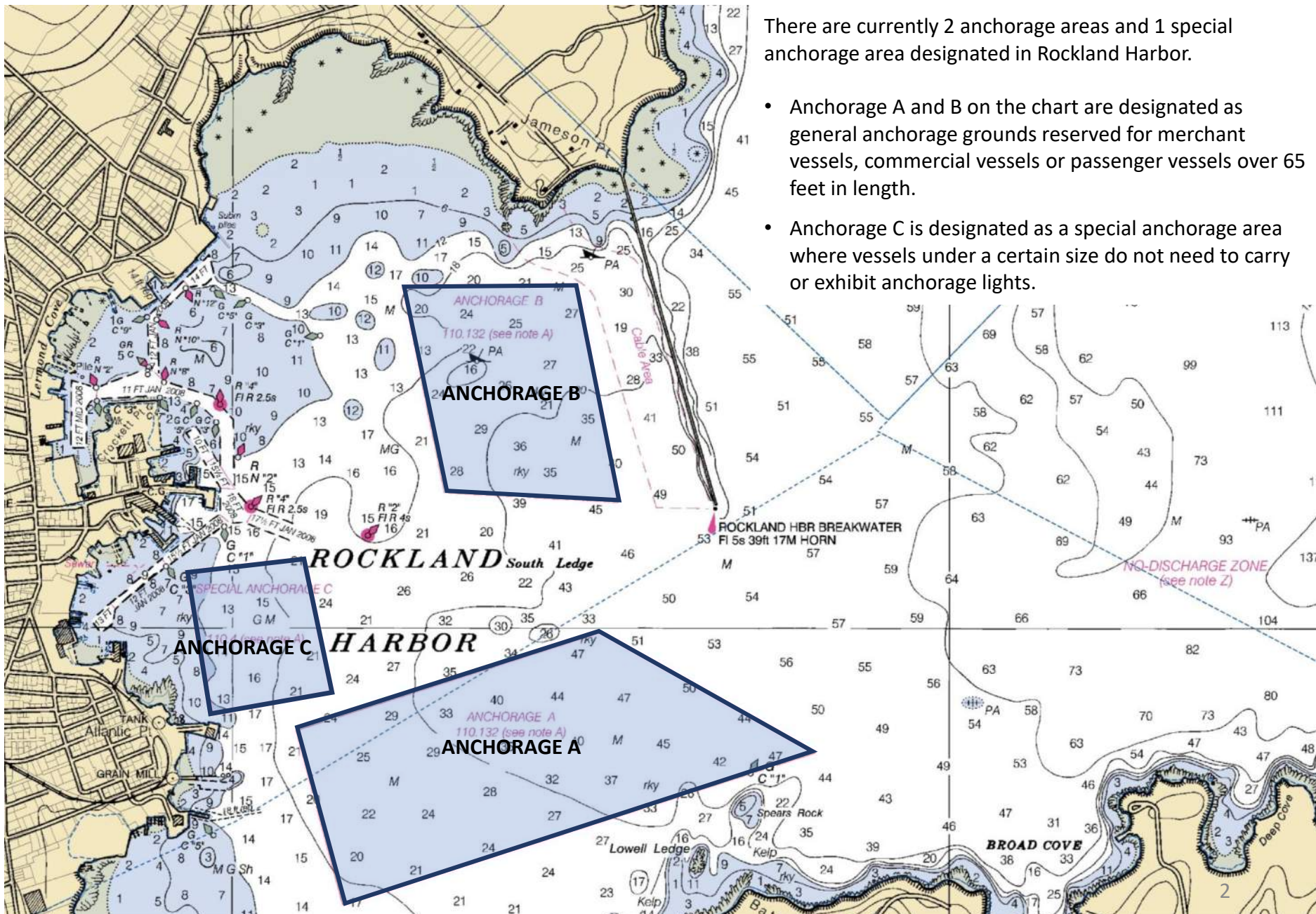


Harbor Inventory

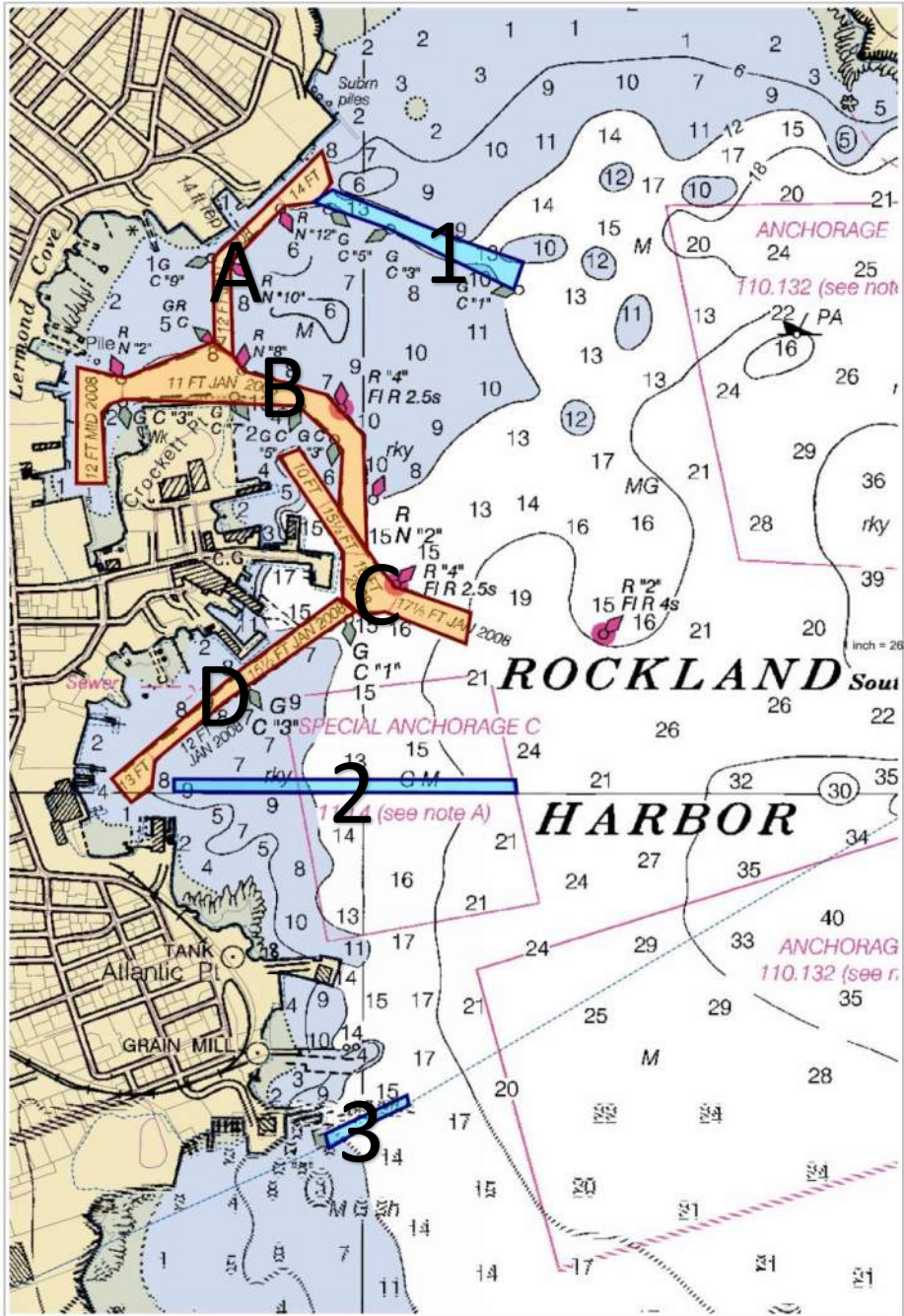
A. Anchorage Areas

There are currently 2 anchorage areas and 1 special anchorage area designated in Rockland Harbor.

- Anchorage A and B on the chart are designated as general anchorage grounds reserved for merchant vessels, commercial vessels or passenger vessels over 65 feet in length.
- Anchorage C is designated as a special anchorage area where vessels under a certain size do not need to carry or exhibit anchorage lights.



B. Channels



Rockland Harbor has seven (7) channels. There are four (4) federally dredged channels which are subject to maintenance and oversight from the US Army Corps of Engineers (ACOE). There are three (3) municipally managed channels.

Federal Channels

- A. Northern Federal Channel.** Extends from the preferred channel marker north to the docks and turning basin. According to Coast Pilot, depth was 13' in the channel and 14' in turning basing in 2008.
- B. Lermond Cove/Crockett Point Channel.** Maine State Ferry Service uses the channel regularly. This channel leads to the entrance of the northern channel. Depths range from 14' at the entrance to 11' towards Lermond Cove.
- C. Approach Channel.** Commencing just east of Red #2 cage buoy heading towards the Coast Guard pier, this is the entrance to all channels. Charted depth is 17.6'. The north-western portion of the channel, after the intersection with the "B" channel, stops within a short distance.
- D. South Channel.** This channel commences near the Coast Guard pier and ends at the Public Landing with a turning basin. Charted depth is 15'.

Municipal Channels

- 1. Northern City Channel.** Most northern channel in the Harbor. This channel is federal marked but not maintained. Channel depth is approximately 13' according to NOAA Charts
- 2. Main City Channel.** This channel runs through the central mooring area toward the Public Landing. It is approximately 80 feet wide and is was established by the City, not as part of a federal navigation project.
- 3. South End City Channel.** Short City channel running approximately from the ship yard property to the marine rail.

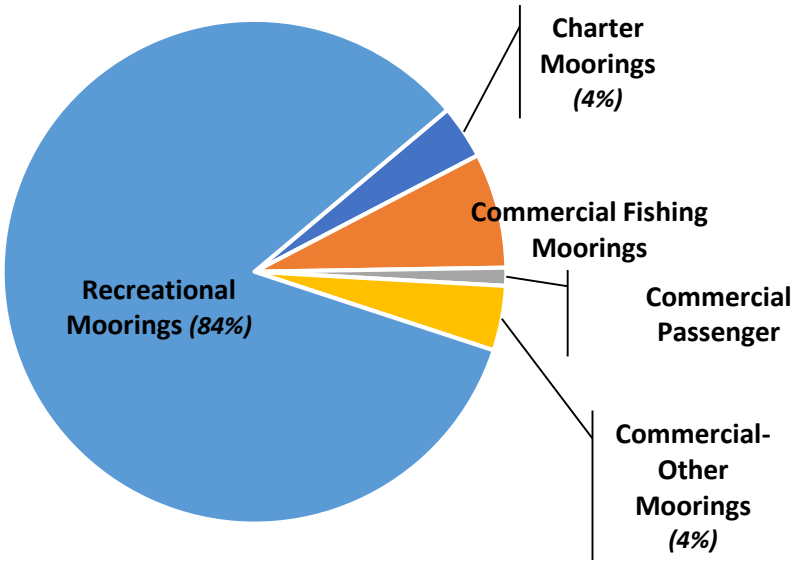
C. Moorings

597 moorings in Rockland as of January 2019.

Estimated Mooring Use Breakdown		
Private	413	69%
Rental	111	19%
Service	46	8%
Other	27	4%

Estimated Resident vs Non Resident Breakdown		
Residential	227	38%
Non-Residential	370	62%

Moorings Classifications



Moorings Areas

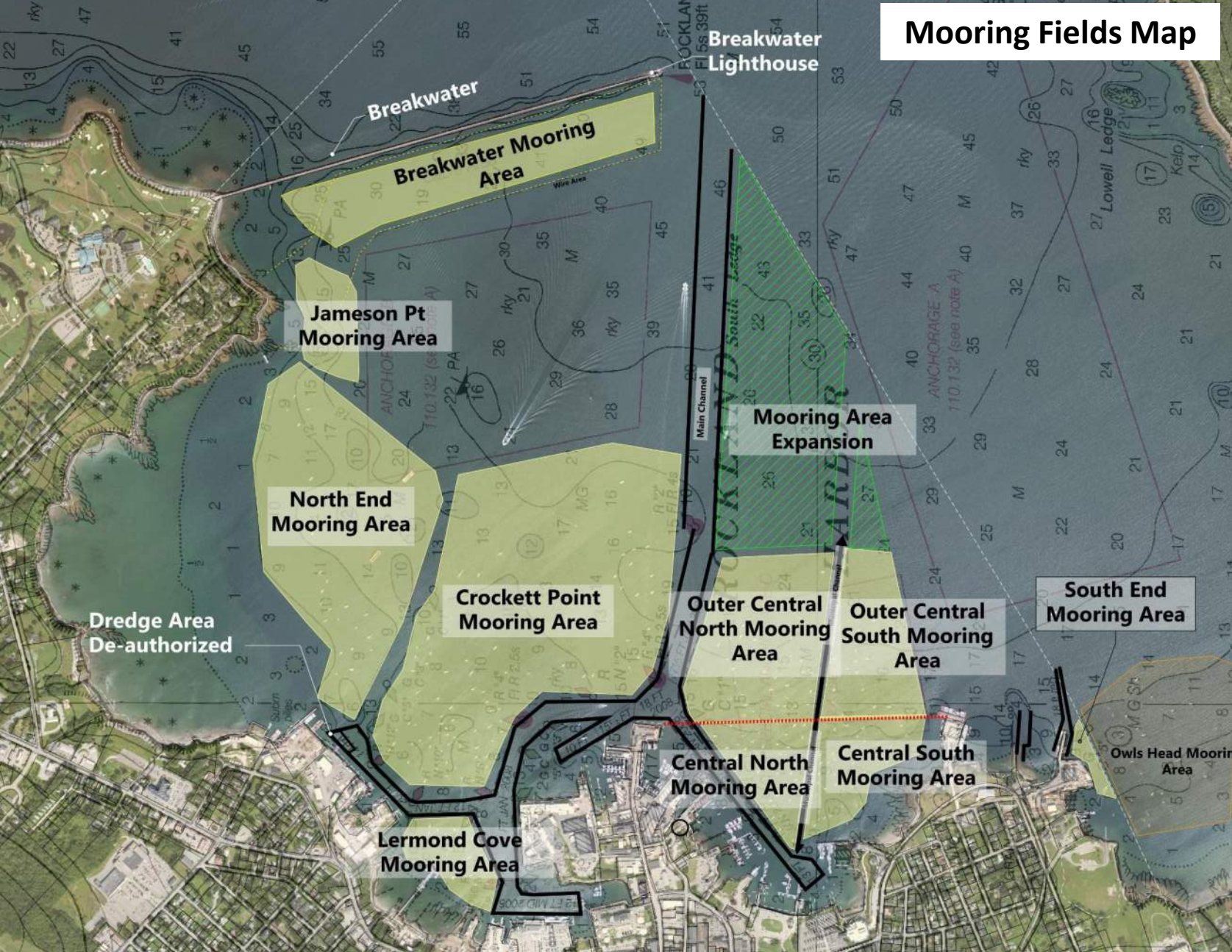
The City has 6 primary mooring fields – Breakwater Area, Central (broken into 4 parts), Crocket Point, Jameson Point, Lermond Cove, and North End.

Moorings by Location					
Moorings Area	# of Moorings	% of Total	Moorings Area	# of Moorings	% of Total
Breakwater	12	2%	Crocket Point	75	14%
Central	265	49%	Jameson Point	10	2%
Inner Central - North	81		Lermond Cove	29	5%
Inner Central - South	79		North End	145	27%
Outer Central - North	61				
Outer Central - South	44				

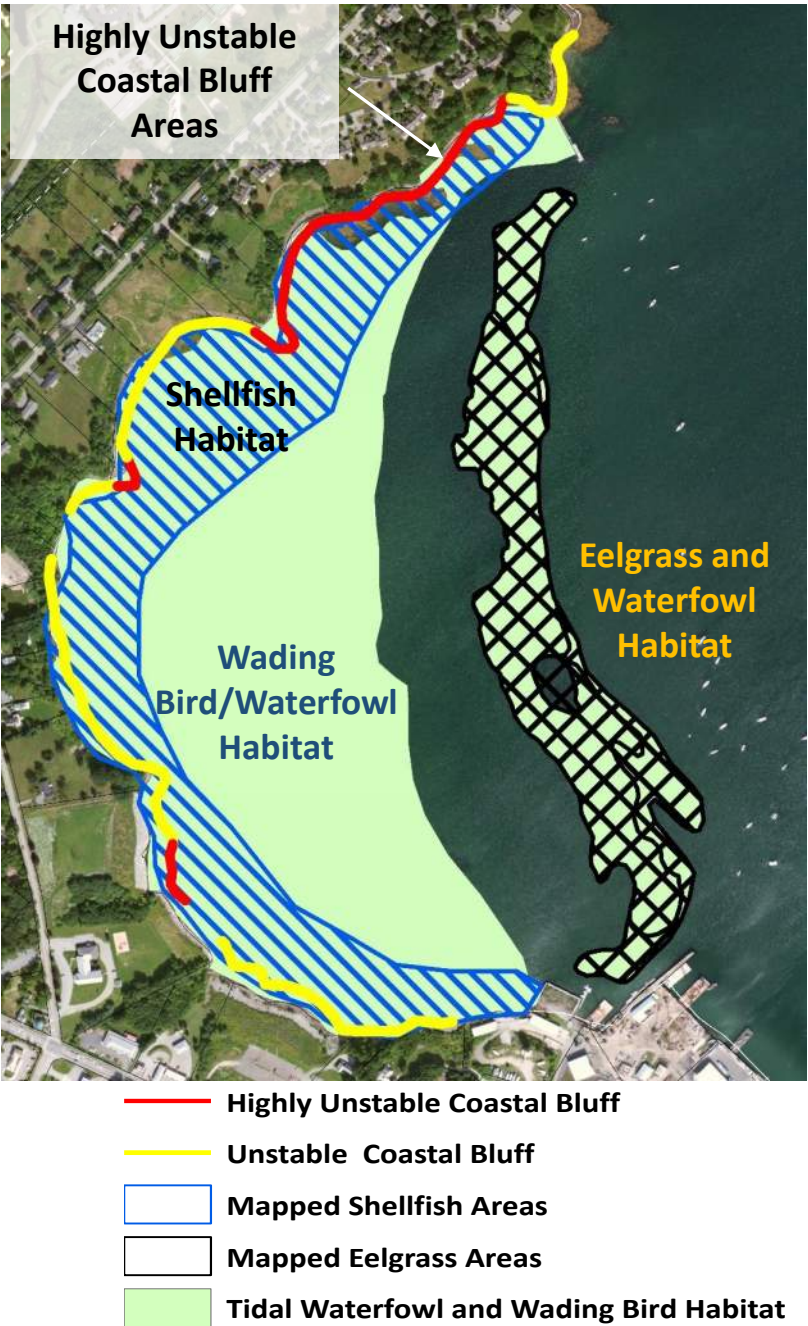
Source: Rockland Harbor Masters Office, January 2019

C. Moorings

Mooring Fields Map



D. Natural Environment



Habitat

Tidal Waterfowl and Wading Bird Habitat

- The Maine Department of Environmental Protection (DEP) has identified portions of the cove near Jameson Point as Tidal Waterfowl and Wading Bird Habitat.
- These areas are typically located within coastal wetlands, eelgrass areas, or other coastal habitat which is already regulated as a protected natural resource under the NRPA.

Eelgrass Areas

- Maine Department of Marine Resources (DMR) has mapped an eelgrass area in the cove near Jameson Point.
- Eelgrass is an important natural habitat that provides critical shelter for juvenile fish and invertebrates.

Shellfish Habitat

- DMR has mapped shellfish habitat in the cove near Jameson Point.
- Shellfish harvesting is prohibited in all of Rockland Harbor due to existing pollution.

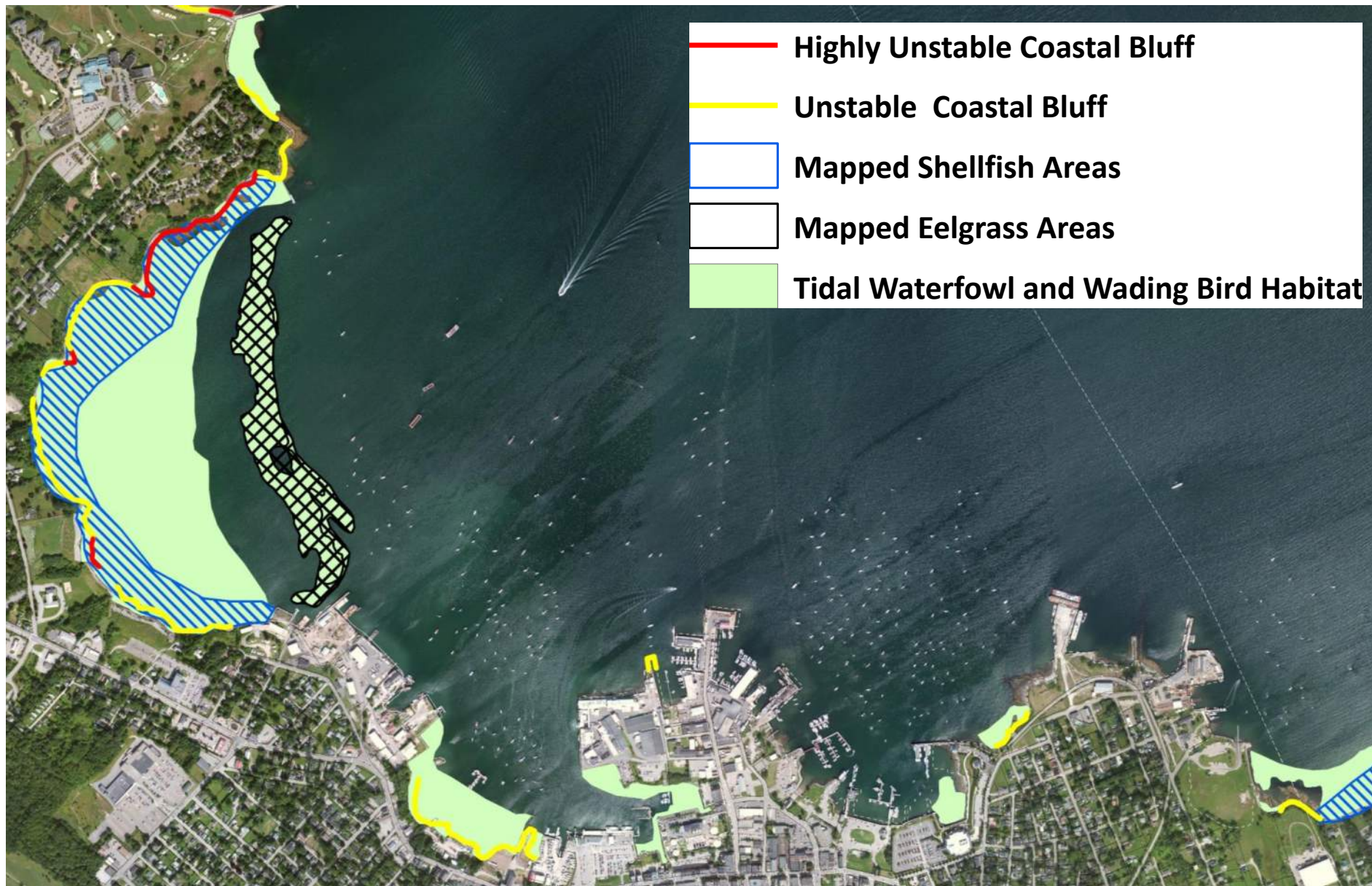
Water Quality

- There are several licensed discharges in Rockland Harbor
- Maine Department of Marine Resources has closed Rockland Harbor to shellfish harvesting due to water quality and bacteria issues

Coastal Bluff Hazard Areas

- Maine Geological Survey has identified several areas along the waterfront that are classified as highly unstable or unstable coastal bluffs. These areas are at risk of erosion.

D. Natural Environment

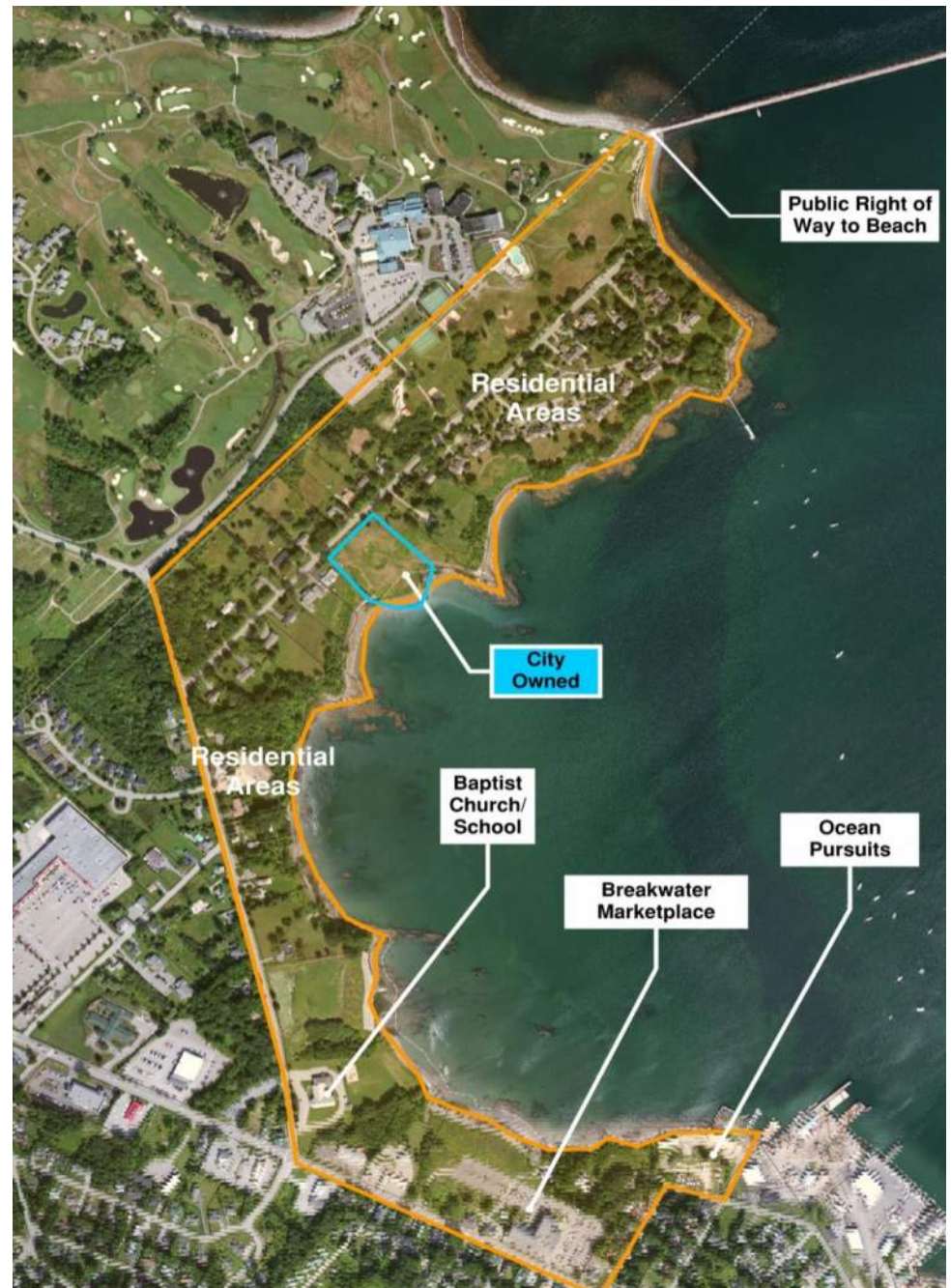


Map of Rockland's Waterfront Areas



E. Waterfront

FOCUS MAP: Jameson Point



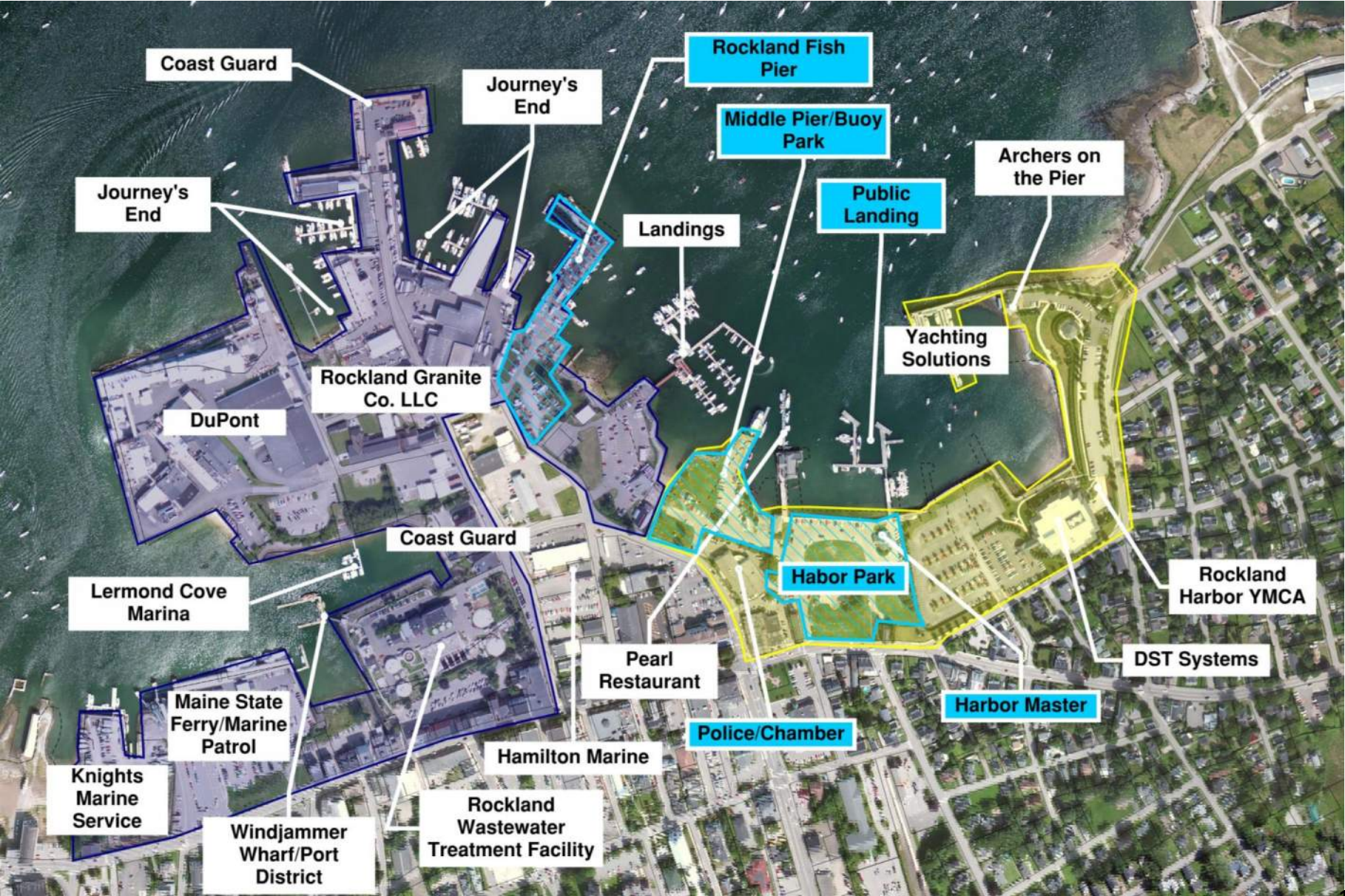
E. Waterfront

FOCUS MAP: North End



E. Waterfront

FOCUS MAP: Lermond Cove, Crockett's Point, and Central Area



FOCUS MAP: South End



ROCKLAND FERRY ROUTES

The State of Maine provides ferry service to connect the nearby Island communities of Matinicus, North Haven, and Vinalhaven.

The ferries operate year round from the Maine State Ferry Terminal at Lermond Cove.

Ridership of all routes exceeded 205,000 in 2018.

