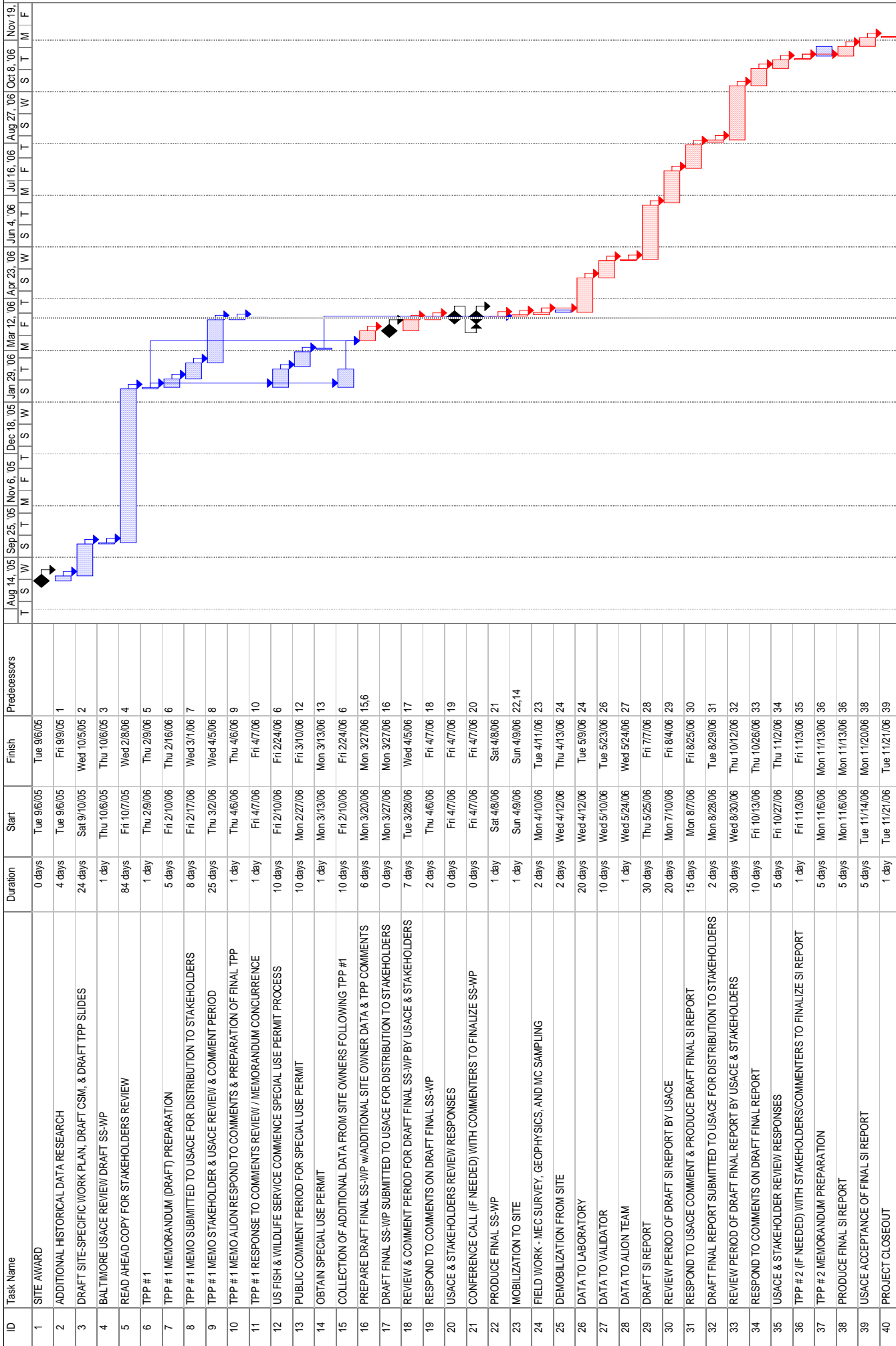


## **ATTACHMENT 10**

# SEAL ISLAND



█ Task  
█ Critical Task  
▨ Milestone  
▨ Summary  
▬ Rolled Up Task  
▬ Rolled Up Critical Task  
▬ Rolled Up Milestone  
▬ Rolled Up Progress  
▬ Split  
▬ External Tasks  
▬ Project Summary  
▬ Group By Summary  
▬ Deadline

Date: Fri 4/7/06  
Schedule.mpp

FIGURE B-3 SCHEDULE FOR SITE INSPECTION OF SEAL ISLAND

NOTES: 1) Duration is in weekdays. 2) Holidays are not counted in duration. 3) Schedule was revised following TPP #1.