



FRESHWATER DATA FORMS

Wetland Function-Value Evaluation Form

Total area of wetland _____ Human made? _____ Is wetland part of a wildlife corridor? _____ or a "habitat island"? _____

Adjacent land use _____ Distance to nearest roadway or other development _____

Dominant wetland systems present _____ Contiguous undeveloped buffer zone present _____

Is the wetland a separate hydraulic system? _____ If not, where does the wetland lie in the drainage basin? _____

How many tributaries contribute to the wetland? _____ Wildlife & vegetation diversity/abundance (see attached list)

Wetland I.D. _____

Latitude _____ Longitude _____

Prepared by: _____ Date _____

Wetland Impact:
Type _____ Area _____

Evaluation based on:
Office _____ Field _____

Corps manual wetland delineation completed? Y _____ N _____

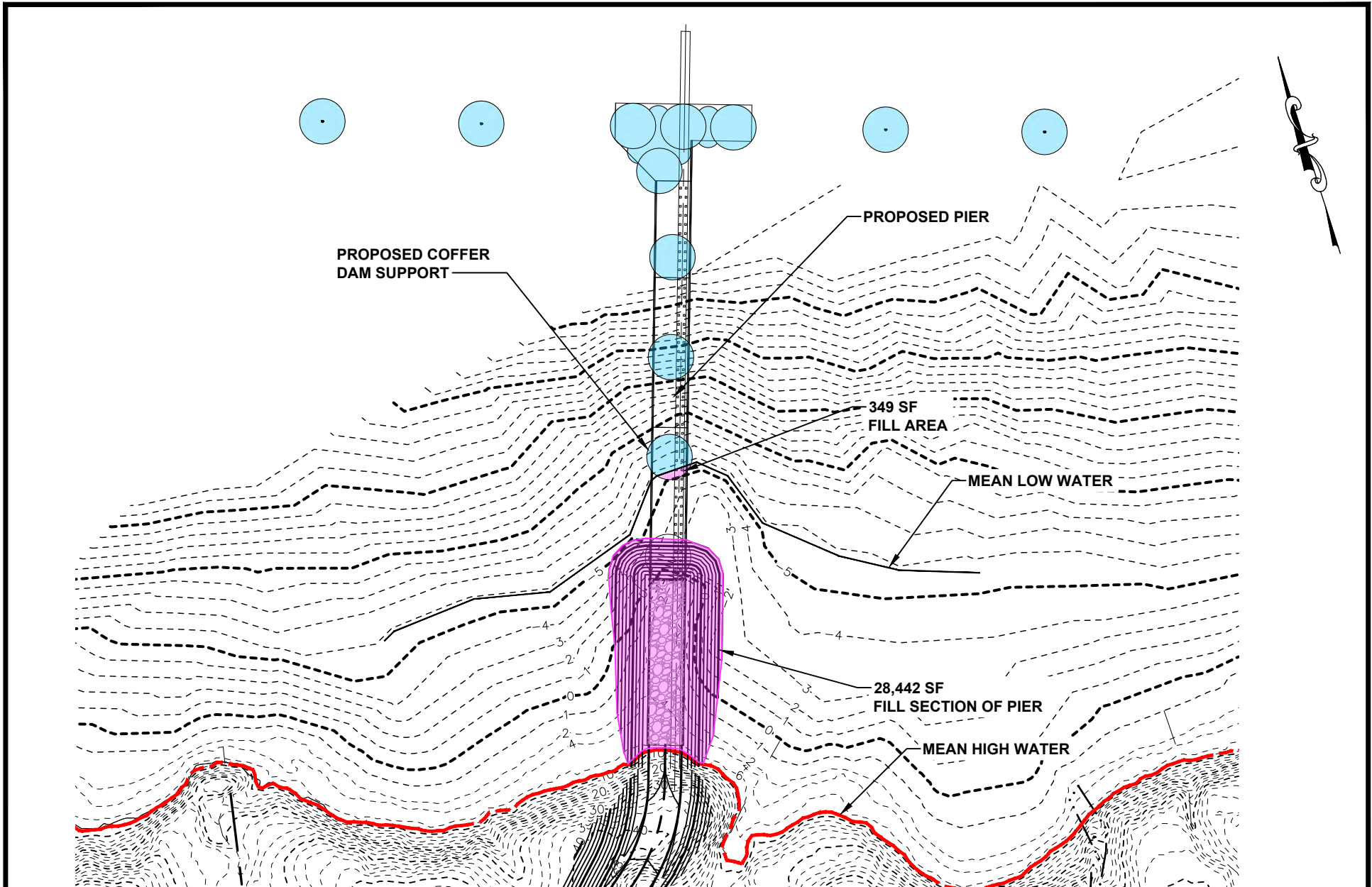
Function/Value	Suitability Y / N	Rationale (Reference #)*	Principal Function(s)/Value(s)	Comments
 Groundwater Recharge/Discharge				
 Floodflow Alteration				
 Fish and Shellfish Habitat				
 Sediment/Toxicant Retention				
 Nutrient Removal				
 Production Export				
 Sediment/Shoreline Stabilization				
 Wildlife Habitat				
 Recreation				
 Educational/Scientific Value				
 Uniqueness/Heritage				
 Visual Quality/Aesthetics				
ES Endangered Species Habitat				
Other				

Notes:

* Refer to backup list of numbered considerations.



FRESHWATER WETLAND SITE PLAN

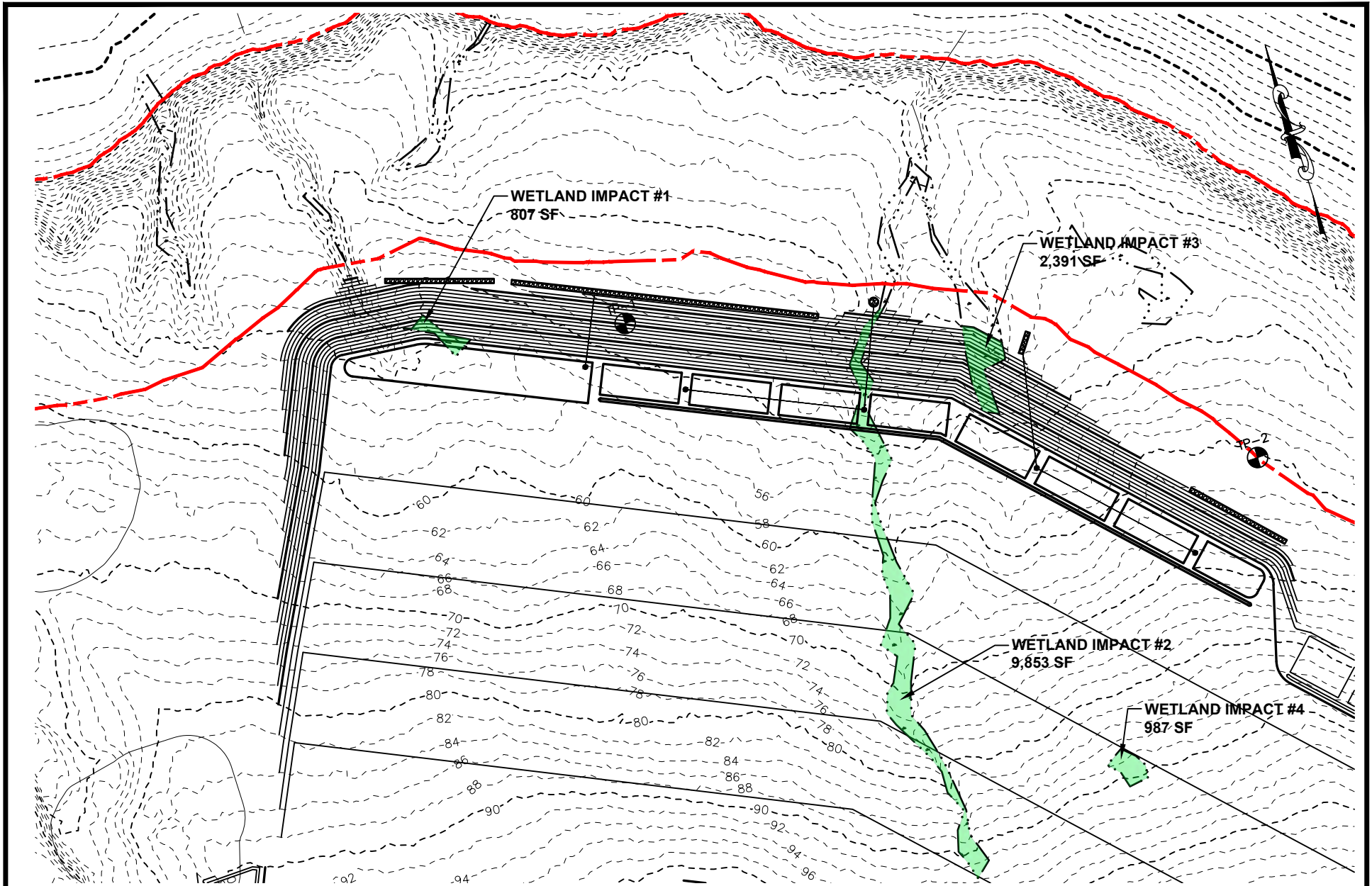


PROJECT	BOWDEN POINT PROPERTIES, LLC PROSPECT, MAINE	DWG No.	1	BY	WAB
		JN	12617.001	DATE	2022.01.25
TITLE	COASTAL WETLANDS FUNCTIONAL ASSESSMENT SITE PLAN	SCALE	1"=150'	REV.	
				REV. DATE	



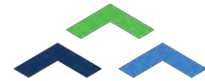


COASTAL WETLAND SITE PLAN



PROJECT	BOWDEN POINT PROPERTIES, LLC PROSPECT, MAINE		DWG No.	2	BY	WAB
	FRESHWATER WETLANDS FUNCTIONAL ASSESSMENT SITE PLAN		JN	12617.001	DATE	2022.01.26
SCALE			1"=150'	REV.		
				REV. DATE		





ATTACHMENT 13

COMPENSATION

Summary

The Applicant, Bowden Point Properties, proposes to compensate for lost wetland functions associated with the project through the In Lieu Fee Program. Based on the latest DEP Fact Sheet dated 1/1/2022-12/31/2022 the following in lieu compensation has been calculated for the project:

Freshwater Wetlands (not of special significance)

The total area of freshwater wetland permanent disturbance will be 14,038 sf. The fact sheet indicates this fee to be \$5.05 per sf for Natural Resource Enhancement and Restoration cost and \$0.10 per square foot for Average Assessed Land Value (Waldo County)

$$\text{Fee} = 14,038 \times (\$5.05 + \$0.10) = \$72,295.70$$

Coastal Wetlands

The total area of coastal wetland permanent disturbance will be 49,621 sf. The fact sheet indicates this fee to be \$5.05 per sf for Natural Resource Enhancement and Restoration cost and \$0.10 per square foot for Average Assessed Land Value and a multiplier of 2 for wetlands of significance associated with a specific resource. (Waldo County)

$$\text{Fee} = 49,621 \times (\$5.05 + \$0.10) \times 2 = \$511,096.30$$

$$\text{Total Project Compensation} = \underline{\$583,392.00}$$