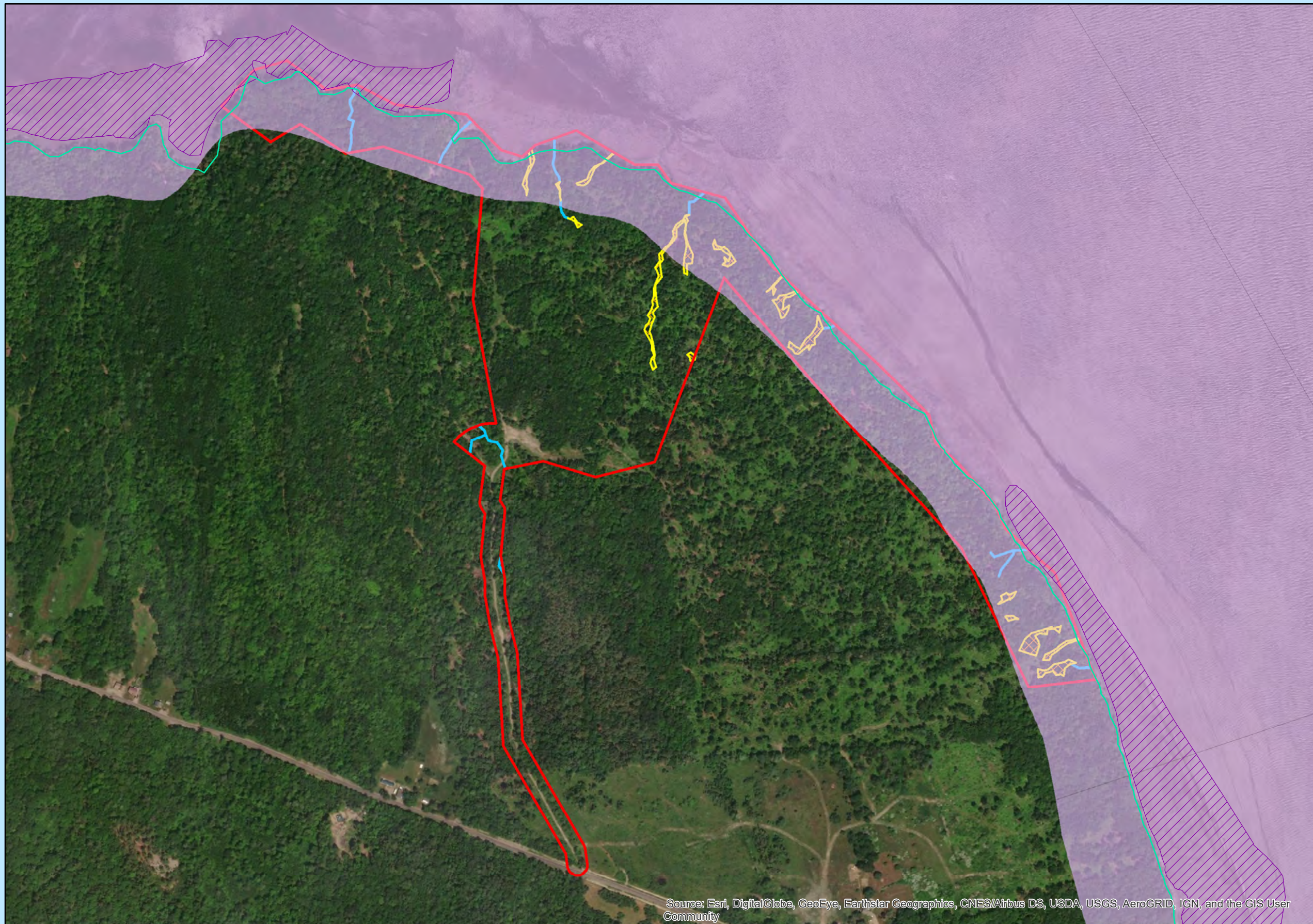




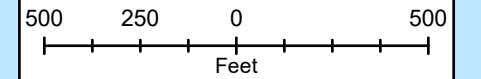
ATTACHMENT 8

ADDITIONAL PLANS
Natural Resource Map

Natural Resource Plan - Levy Parcel - Prospect



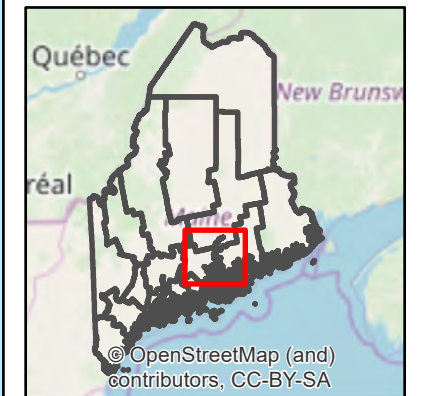
Source: Esri, DigitalGlobe, GeoEye, Earthstar Geographics, CNES/Airbus DS, USDA, USGS, AeroGRID, IGN, and the GIS User Community



Legend

- Natural Resource Survey Area
- Wetland Area CES
- Streams CES
- Tidal Waterfowl and Wading Bird Habitat
- Highest Annual Tide (2015)
- FEMA Flood Zones

MAINE



Project Title: Salmon's Inc.
Description:
Natural Resource Plan

Project No.: 12617.001
 By: NAI
 Date: 6/13/19
 Updated: 10/24/2019
 By: [jszillery]

MAP NOTES:

1. WETLANDS SHOWN HEREON WERE DELINEATED IN JULY 2019. WETLANDS WERE FIELD DELINEATED IN ACCORDANCE WITH U.S. ARMY CORPS OF ENGINEERS STANDARDS BY CES, INC.
2. FEATURES DEPICTED ON THIS PLAN WERE LOCATED USING A MAPPING GRADE SUB-METER CAPABLE GPS/GNSS RECEIVER.
3. MAP IS PROJECTED USING UTM ZONE19 COORDINATES, AND REFERENCES THE NORTH AMERICAN DATUM OF 1983 (NAD83).
4. NORTH ARROW IS ORIENTED TO GRID NORTH IN ALL MAP EXTENTS DEPICTED HEREIN.
5. AERIAL PHOTO BASE MAP FROM IMAGERY IS 1-M 2013 NAIP IMAGERY BY USDA, FSA, TOPOGRAPHIC QUAD FROM ESRI, 2015.

