



SAFE HARBOR
— ROCKLAND —

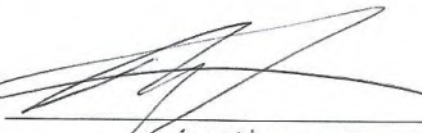
June 5, 2021

To Whom It May Concern:

The signature below authorizes Landmark Corporation Surveyors & Engineers to act as the applicant's agent in the processing of the enclosed application.

Applicant's Signature:

Print Name:


William Mo-zong
SHM Rockland, LLC

ATTACHMENT 1

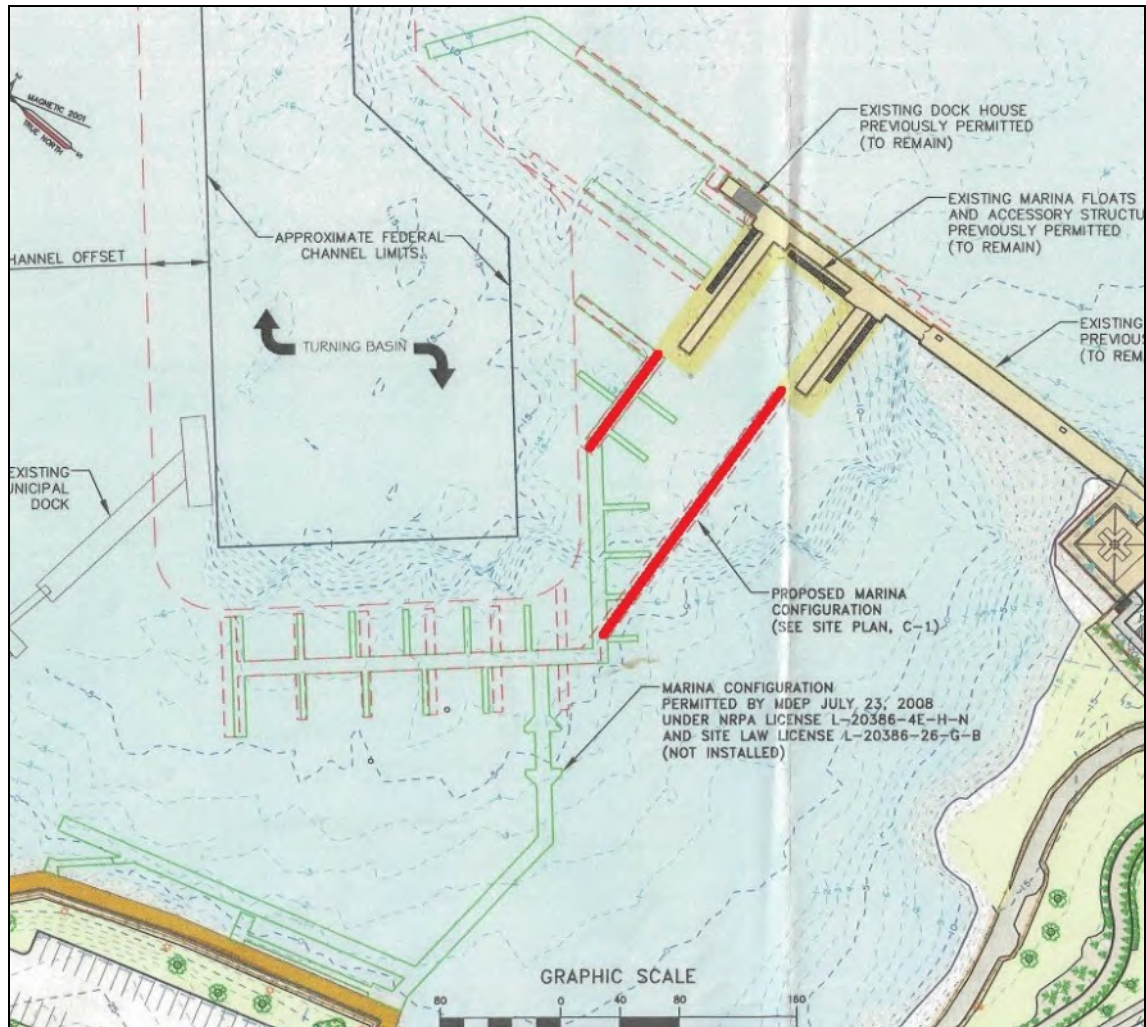
ACTIVITY DESCRIPTION

Project Background and Regulatory History

This marina expansion project is off the shore of land that was recently purchased by Safe Harbor Marinas (SHM Rockland, LLC) but was part of a larger redevelopment project by others dating back to 2000. The recently purchased property consists of 2.45 acres along with all the intertidal land along the entire frontage of the original parcel. There has been a desire to expand the existing marina and meet the demand for slips for well over 10 years. In fact, an expansion of the marina facility was permitted in 2008 with similar scope. The history of DEP project approvals is as follows:

Permit Number	Date	Project Description
L-20386-26-A-N L-20386-4E-B-N	10-24-2000	Office Building, Day Care Center, Boat House, Pavilion, Boardwalk for total of 5.44 ac impervious (reduced from 6.44 ac). Seawall reconstruction and boardwalk construction with coastal wetland impact of 18 sf
L-20386-4C-C-N	12-20-2000	Breakwater Restoration, Pier Construction, and Dredge. 1,050 sf of impact to coastal wetland
L-20386-4C-D-T	3-11-2008	Transfer from Bracebridge Corporation to Rockland Harbor Park, LLC
L-20386-26-E-M L-20386-2F-N	5-2-2008	Boathouse Conversion and Expansion. 1,386 sf of decking and paved area, 4 new pilings
L-20386-26-G-B L-20386-4E-H-N	7-23-2008	Expand Marina 98sf direct impact and 17,010sf indirect impact, expand parking creating 0.52 acres impervious and developed area
L-20386-26-I-M L-20386-2F-J-M	7-23-2009	Construct 85sf bathroom area on previously constructed pier. Minor Change
L-20386-26-I-M L-20386-2F-J-M	1-26-2010	Reconfigure marina expansion reduced to 65sf of direct impact and 13,160sf of indirect impact
L-20386-26-M-M	3-4-2010	Building Use Change Day Care to Maine Coastal Islands
L-20386-26-N-T L-20386-43-O-T	5-18-2021	Transfer from from Rockland Harbor Park, LLC to SHM Rockland, LLC

For reference, below is an image of a 2009 plan that shows the previously approved marina expansion from 2008 (shown in green) and the subsequent modification in 2010 (shown in dashed red and labeled as “Proposed Marina Configuration”):



Please note that only the floats marked in red, from these previous approvals, were constructed. For reference below is an aerial image showing current conditions: