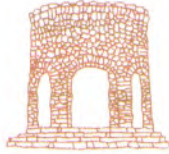


ATTACHMENT 11

MAINE HISTORIC PRESERVATION COMMISSION &  
FIVE INDIAN TRIBES



# LANDMARK CORPORATION

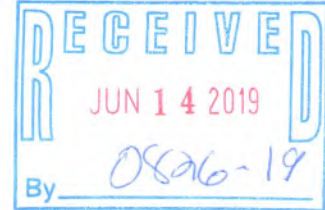
SURVEYORS & ENGINEERS

K. MARK BARBOUR, PLS

MICHAEL J. SABATINI, P.E.

June 12, 2019

Maine Historic Preservation Commission  
55 Capital Street  
65 State House Station  
Augusta, ME 04333-0065



Re: Project Review (Section 106) for  
Marina Expansion by Yachting Solutions  
Water and Ocean Streets  
Rockland, Maine  
LC Proj. No. 16-012

Dear Sir/Madam:

On behalf of Yachting Solutions, tenants of the Marina on a property owned by Rockland Harbor Park, LLC, we are writing to request project review in accordance with Section 106 of the National Historic Preservation Act. This project will require a Site Law and NRPA Permit and will receive federal funding through a Boating Infrastructure Grant.

The project includes a marina expansion (floats and piers), dredging, fuel tank and pump system, parking expansion, upgraded electrical service, and conversion of the exterior pavilion to interior space.

Attached please find the following supporting information:

- USGS Location Map
- Site Plan showing marina expansion improvements and picture key
- Site Pictures
- Structure Survey Form (Abutting Rockland Harbor Master Building)

This property, formally owned by Bracebridge Corporation, has gone through numerous permitting iterations and likely prior Historic Reviews. A summary is as follows:

---

219 MEADOW STREET      ROCKPORT, MAINE      04856

PHONE: (207) 236-6757      FAX: (207) 470-7020

WWW.LANDMARKMAINE.COM

DEP Permit Number	Date	Project Description
L-20386-26-A-N L-20386-4E-B-N	10-24-2000	Office Building, Day Care Center, Boat House, Pavilion, Boardwalk for total of 5.44 ac impervious (reduced from 6.44 ac). Seawall reconstruction and boardwalk construction with coastal wetland impact of 18 sf
L-20386-4C-C-N	12-20-2000	Breakwater Restoration, Pier Construction, and Dredge. 1,050 sf of impact to coastal wetland
L-20386-4C-D-T	3-11-2008	Transfer from Bracebridge Corporation to Rockland Harbor Park, LLC
L-20386-26-E-M L-20386-2F-N	5-2-2008	Boathouse Conversion and Expansion. 1,386 sf of decking and paved area, 4 new pilings
L-20386-26-G-B L-20386-4E-H-N	7-23-2008	Expand Marina 98sf direct impact and 17,010sf indirect impact, expand parking creating 0.52 acres impervious and developed area
L-20386-26-I-M L-20386-2F-J-M	7-23-2009	Construct 85sf bathroom area on previously constructed pier. Minor Change
L-20386-26-I-M L-20386-2F-J-M	1-26-2010	Reconfigure marina expansion reduced to 65sf of direct impact and 13,160sf of indirect impact
L-20386-26-M-M	3-4-2010	Building Use Change Day Care to Maine Coastal Islands

The proposed work will create 0.18 acres of impervious area and approximately include 38,164 sf of floats and piers, 280 sf of impact from piles, and 147,300 cy of dredging in two phases.

Please let us know if you have any questions or you require additional information.

Sincerely,  
Landmark Corporation Surveyors & Engineers

Michael J. Sabatini., P.E.

Attachments

Based on the information submitted, I have concluded that there will be no historic properties affected by the proposed undertaking, as defined by Section 106 of the National Historic Preservation Act. Consequently, pursuant to 36 CFR 800.4(d)(1), no further Section 106 consultation is required unless additional resources are discovered during project implementation pursuant to 36 CFR 800.13.

*Kirk F. Mohney*  
 Kirk F. Mohney,  
 State Historic Preservation Officer  
 Maine Historic Preservation Commission

6/19/19  
 Date

MAFC # 0826-19



# LANDMARK CORPORATION

SURVEYORS & ENGINEERS

K. MARK BARBOUR, PLS

MICHAEL J. SABATINI, P.E

June 10, 2021

Aroostook Band of Micmacs  
Attn: Tribal Historic Preservation Officer  
7 Northern Road  
Presque Isle, Maine 04769

Re: NRPA Permit Application  
SHM Rockland, LLC  
Marina Expansion  
Rockland, Maine  
LC Proj. No. 16-012

To Whom It May Concern:

At the request of the Army Corps of Engineers and in conjunction with the Natural Resources Protection Act, we are notifying you that we have submitted the above referenced application with the Maine Department of Environmental Protection on behalf of the SHM Rockland, LLC. The cover sheet of this application is enclosed. The site is located on Ocean Drive (part of Tax Map 5, Block B, Lot 13) in Rockland, Maine, shown on the enclosed USGS map. Please call our office if you have any questions or information regarding the presence of any historic and/or archaeological resources that may affect this project.

Sincerely,

Landmark Corporation Surveyors & Engineers

Michael J. Sabatini, P.E.

Enclosures



# LANDMARK CORPORATION

SURVEYORS & ENGINEERS

K. MARK BARBOUR, PLS

MICHAEL J. SABATINI, P.E.

June 10, 2021

Houlton Band of Maliseet Indians  
Attn: Tribal Historic Preservation Officer  
88 Bell Road  
Littleton, Maine 04730

Re: NRPA Permit Application  
SHM Rockland, LLC  
Marina Expansion  
Rockland, Maine  
LC Proj. No. 16-012

To Whom It May Concern:

At the request of the Army Corps of Engineers and in conjunction with the Natural Resources Protection Act, we are notifying you that we have submitted the above referenced application with the Maine Department of Environmental Protection on behalf of the SHM Rockland, LLC. The cover sheet of this application is enclosed. The site is located on Ocean Drive (part of Tax Map 5, Block B, Lot 13) in Rockland, Maine, shown on the enclosed USGS map. Please call our office if you have any questions or information regarding the presence of any historic and/or archaeological resources that may affect this project.

Sincerely,

Landmark Corporation Surveyors & Engineers

Michael J. Sabatini, P.E.

Enclosures



# LANDMARK CORPORATION

SURVEYORS & ENGINEERS

K. MARK BARBOUR, PLS

MICHAEL J. SABATINI, P.E.

June 10, 2021

Passamaquoddy Tribe of Indians  
Attn: Tribal Historic Preservation Officer  
P.O. Box 301  
Princeton, Maine 04668

Re: NRPA Permit Application  
SHM Rockland, LLC  
Marina Expansion  
Rockland, Maine  
LC Proj. No. 16-012

To Whom It May Concern:

At the request of the Army Corps of Engineers and in conjunction with the Natural Resources Protection Act, we are notifying you that we have submitted the above referenced application with the Maine Department of Environmental Protection on behalf of the SHM Rockland, LLC. The cover sheet of this application is enclosed. The site is located on Ocean Drive (part of Tax Map 5, Block B, Lot 13), in Rockland, Maine, shown on the enclosed USGS map. Please call our office if you have any questions or information regarding the presence of any historic and/or archaeological resources that may affect this project.

Sincerely,

Landmark Corporation Surveyors & Engineers

Michael J. Sabatini, P.E.

Enclosures



# LANDMARK CORPORATION

SURVEYORS & ENGINEERS

K. MARK BARBOUR, PLS

MICHAEL J. SABATINI, P.E.

June 10, 2021

Passamaquoddy Tribe of Indians  
Pleasant Point Reservation  
Attn: Tribal Historic Preservation Officer  
P.O. Box 343  
Perry, Maine 04667

Re: NRPA Permit Application  
SHM Rockland, LLC  
Marina Expansion  
Rockland, Maine  
LC Proj. No. 16-012

To Whom It May Concern:

At the request of the Army Corps of Engineers and in conjunction with the Natural Resources Protection Act, we are notifying you that we have submitted the above referenced application with the Maine Department of Environmental Protection on behalf of the SHM Rockland, LLC. The cover sheet of this application is enclosed. The site is located on Ocean Drive (Tax Map 5, Block B, Lot 13), in Rockland, Maine, shown on the enclosed USGS map. Please call our office if you have any questions or information regarding the presence of any historic and/or archaeological resources that may affect this project.

Sincerely,

Landmark Corporation Surveyors & Engineers

Michael J. Sabatini, P.E.

Enclosures



# LANDMARK CORPORATION

SURVEYORS & ENGINEERS

K. MARK BARBOUR, PLS

MICHAEL J. SABATINI, P.E.

June 10, 2021

Penobscot Indian Nation  
Attn: Tribal Historic Preservation Officer  
6 River Road  
Old Town, Maine 04468

Re: NRPA Permit Application  
SHM Rockland, LLC  
Marina Expansion  
Rockland, Maine  
LC Proj. No. 16-012

To Whom It May Concern:

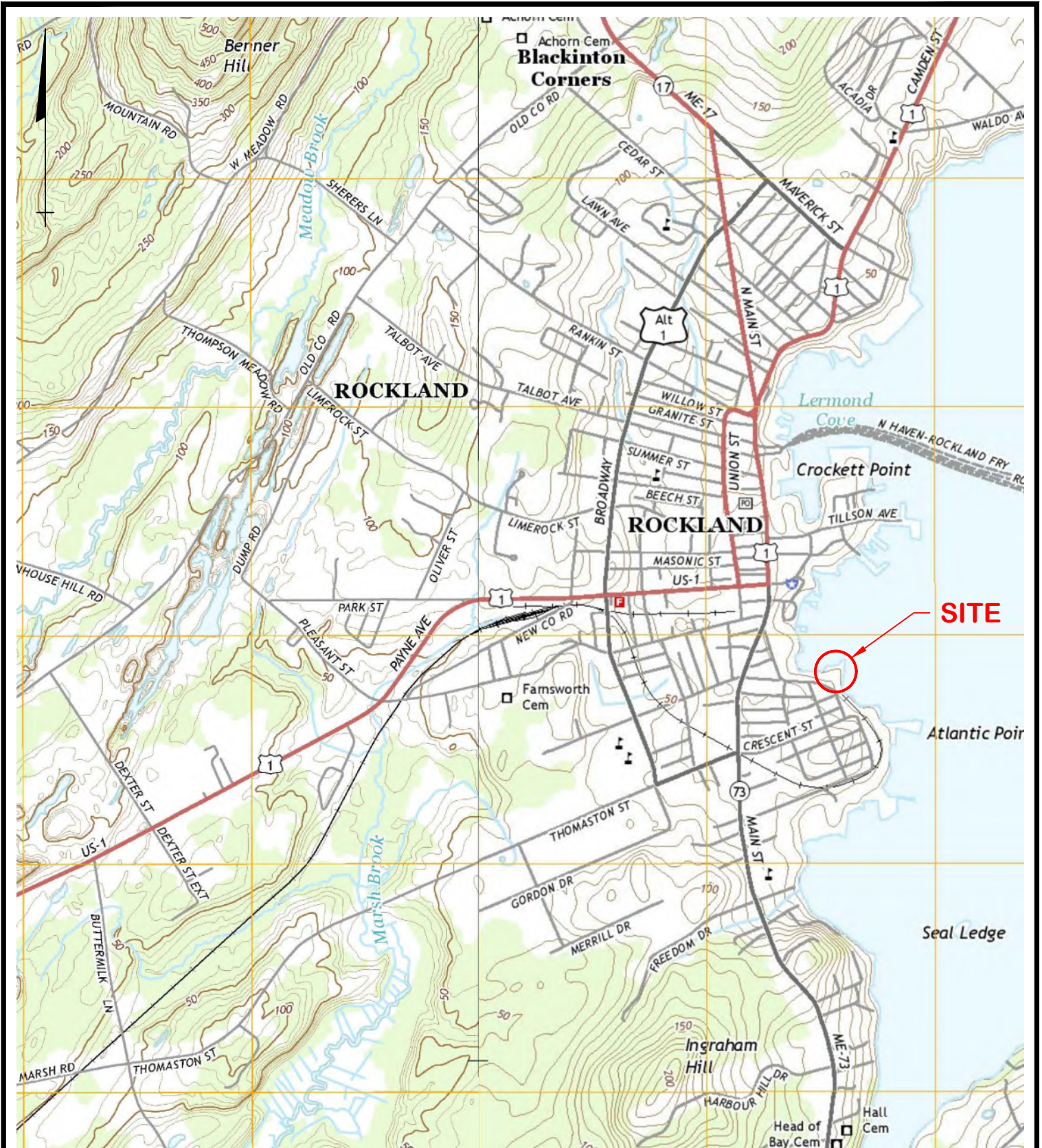
At the request of the Army Corps of Engineers and in conjunction with the Natural Resources Protection Act, we are notifying you that we have submitted the above referenced application with the Maine Department of Environmental Protection on behalf of the SHM Rockland, LLC. The cover sheet of this application is enclosed. The site is located on Ocean Drive (Tax Map 5, Block B, Lot 13), in Rockland, Maine, shown on the enclosed USGS map. Please call our office if you have any questions or information regarding the presence of any historic and/or archaeological resources that may affect this project.

Sincerely,  
Landmark Corporation Surveyors & Engineers

Michael J. Sabatini, P.E.

Enclosures





FROM THE ROCKLAND AND THOMASTON, MAINE 7.5 MINUTE USGS QUADRANGLES



**LANDMARK CORPORATION**

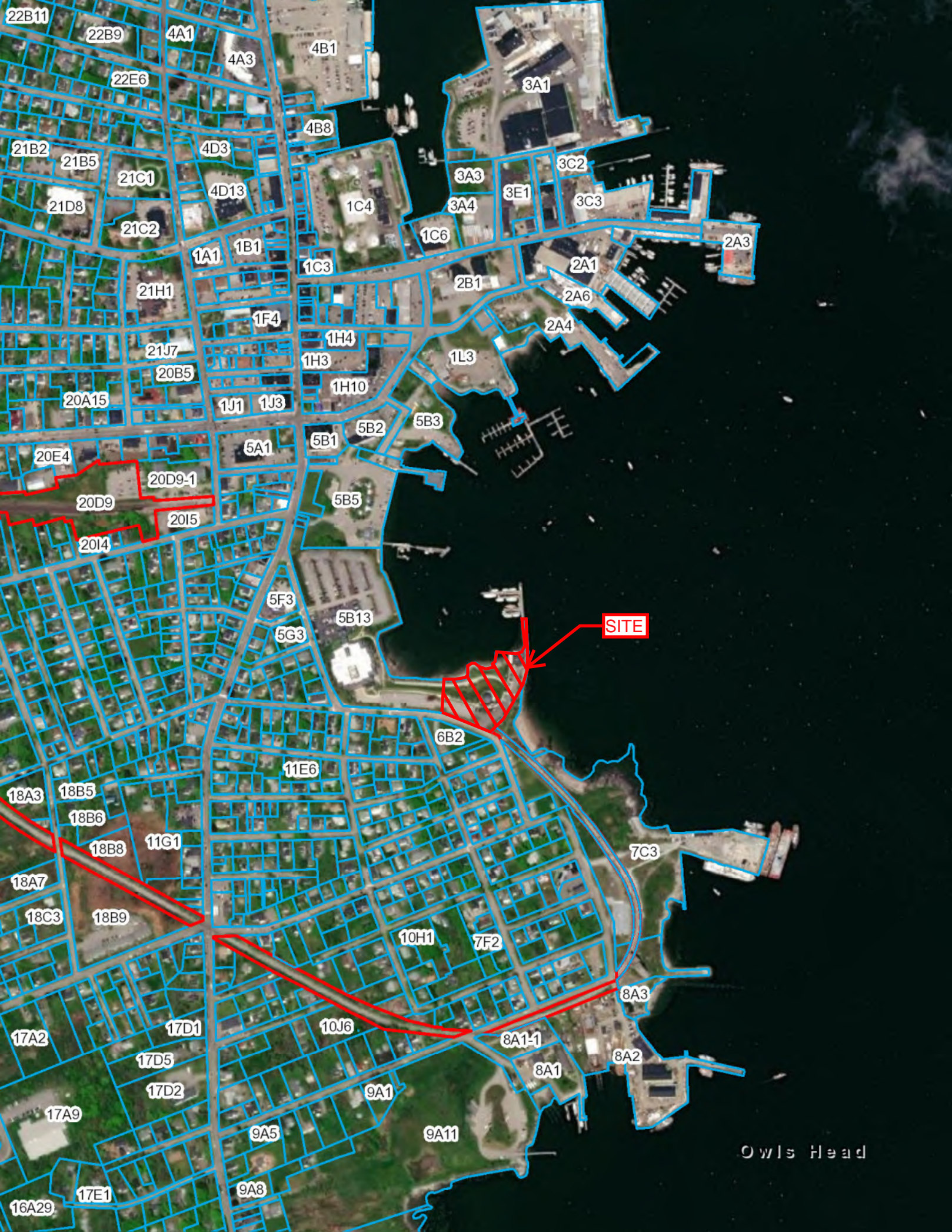
SURVEYORS & ENGINEERS

135 ROCKLAND STREET ROCKPORT, MAINE 04856 PHONE: (207) 236-6757 WWW.LANDMARKMAINE.COM

**SH ROCKLAND MARINA EXPANSION  
LOCATION MAP  
ROCKLAND, MAINE**

SCALE: 1"=2000'

JUNE 10, 2021



**SITE**

Owls Head