

12. PORT OF SEARSPORT OFFSHORE WIND HUB

The Port of Searsport offshore wind hub concept proposes a marine terminal on Sears Island as a centralized hub for assembly and launching of floating foundations as well as erection of the WTG components onto the foundations.

Sears Island as a hub location does not preclude utilizing nearby facilities in the Port of Searsport as the offshore wind marketplace develops. It is anticipated that, as the industry grows in Maine and the region, additional waterfront facilities will be required. These facilities can serve in support roles consisting of (but not limited to) raw materials supply, component manufacturing and operations and maintenance. There are multiple properties in the Port of Searsport that may be able to fulfill these functions.

Figure 12-1 shows additional local facilities can be brought online to serve these roles as the industry grows. These facilities include parcels on and adjacent to the existing Mack Point Terminal, the Sprague Put Parcel and the GAC chemical parcel. These properties are all connected by significant roads and rail lines (Canadian Pacific). Having these commercial/industrial assets within close proximity to the main Sears Island Hub enhances the attractiveness of the site and provides the opportunity to create a larger Searsport area OSW Hub.

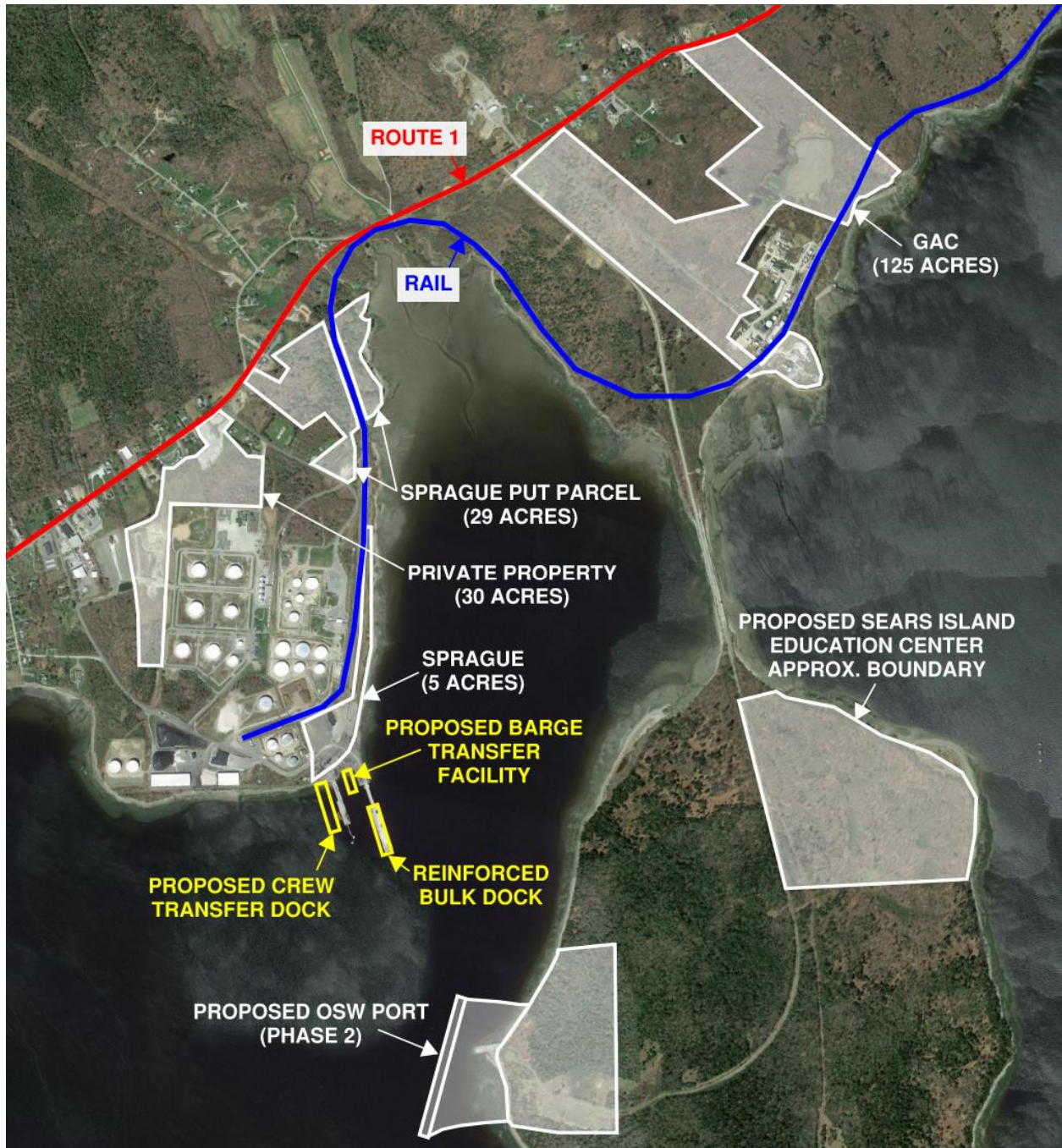


Figure 12-1: Port of Searsport OSW Hub