

## Post OETF Entity

In recent weeks there has been discussion on the need for an entity to carry on the good work that has been accomplished by the Governor’s Ocean Energy Task Force (OETF) and demonstrate Maine’s commitment to this emerging industry. Subcommittee #8 of the task force was formed to gather ideas for this follow-on entity from interested parties and make a recommendation to the OETF. The subcommittee is recommending the concept described below.

The entity needs to be looked at as a business development endeavor. As such, it needs to be operated like a business and be industry led. The details and organization of the entity must be developed by the entity itself. The task force is recommending a proposed framework for such an entity with the following goals:

**Goal: (1) Commercial Scale Wind in the Gulf of Maine by 2015  
(2) Support of tidal/wave energy in Maine**

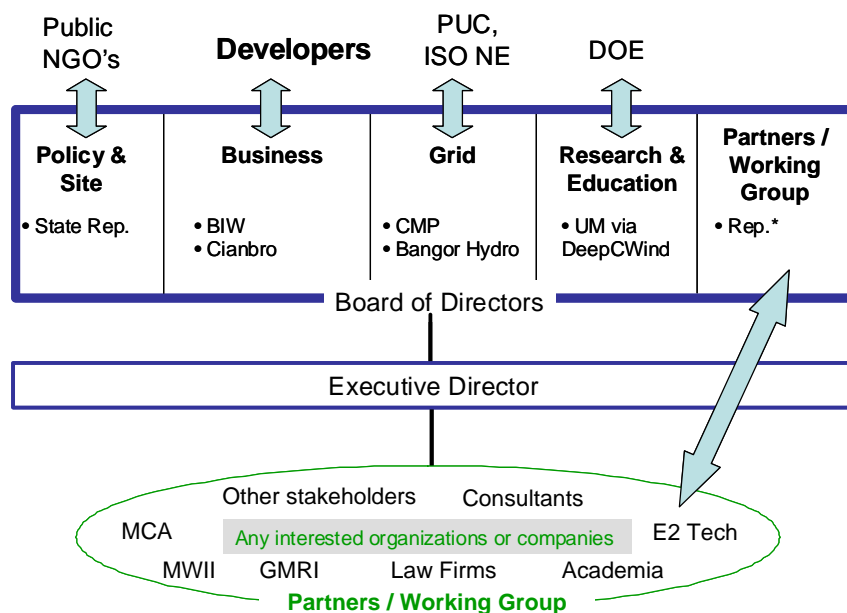
Achievement of this has the potential for many ancillary benefits including:

- Sustaining high-quality manufacturing and professional jobs in Maine;
- Reducing Maine’s dependence on non-renewable, carbon-based energy;
- Development of a new supply chain sector for this industry (possibly attract turbine manufacturers);
- Supporting tidal and ocean energy efforts in Maine;
- Positioning Maine to be a national leader in offshore energy.

In order to accomplish this goal, an entity must be created with a limited number of decision-makers, focusing in specific key areas based on expertise. The leaders in each sector need to be the large companies or organizations through which the majority of work will flow. A large organization will inevitably be slow and the opportunity before the State requires swift action.

We propose an entity structured like Figure 1.

Figure 1: Maine Offshore Wind Association



\* Nonvoting status

## **Core Members & Sectors**

This entity would consist of a limited number of core members (6 or less) who would be the decision-makers for the association and serve as the Board of Directors. The core members would be broken into 4 sectors critical to achieving the stated goal. These sectors would be Policy and Site, Business, Grid and Research & Education. In addition, an individual would be designated to represent the Partners' Working Group in a non-voting capacity. Each sector would be led by 1-2 key businesses or organizations in the state with an additional representative for the Partners/Working group. Each sector would focus on their specific areas. The sectors would communicate internally amongst each other as needed, depicted by the black arrows in Figure 1. In addition, each sector would have a specific external communication focus as depicted by the blue arrows in Figure 1. The focus of each sector is described below:

### **Policy & Site:**

The focus of this group would be to make Maine attractive to a commercial offshore wind developer by removing regulatory roadblocks and conducting advanced site work for potential developers.

- Secure legislative changes as needed;
- Identify commercial scale locations in Federal Waters off Maine
- Interface with MMS to help accelerate permitting
- Begin environmental and other advance activities in support of establishing a site;
- Address energy policy (PPA's, Offshore REC's, etc.)

Due to the nature of its focus, this would be the primary sector interfacing with the public and other stakeholders.

### **Business:**

The focus of this group would be to address the capabilities and infrastructure needed to build, deploy and service commercial offshore wind platforms.

- Conduct a capability study;
- Identify capability gaps and plans to address;
- Take steps to address supply chain and infrastructure issues;
- Address business climate (e.g. Free Trade Zones);

This would be the sector interfacing with potential developers and supply manufacturers.

### **Grid:**

The focus of this group would be to address the capabilities and infrastructure needed to ensure that large commercial scale wind can be handled by the grid.

- Evaluate future grid reliability and needs;
- Identify regulatory roadblocks

This would be the sector interfacing with the PUC, ISO New England and NEPOOL.

### **Research & Education:**

The focus of this group would be to focus on research and development activities in support of achieving the stated goal.

- Continue with R&D tasks of the DeepCwind Consortium;
- Respond to R&D needs identified by the other sectors;
- Take steps to address any identified educational issues.